

Operating Manual

Blaster freezer Models ODIN 10, 15

Item-No.: 323-4540, 323-4545



TABLE OF CONTENTS

SCOPE OF DELIVERY	3
STANDARDS AND DIRECTIVES	3
TECHNICAL OVERVIEW	4
SYMBOL EXPLANATIONS	5
GENERAL INSTRUCTIONS	6
SAFETY INSTRUCTIONS	7
DEVICE INSTALLATION	8
ELECTRICAL CONNECTION	8
STRUCTURE AND COMPONENTS	9
INITIAL START-UP	9
OPERATION – SETTINGS	10
CLEANING	12
MAINTENANCE	12
TAKING DEVICE OUT OF OPERATION / STORAGE / TRANSPORT	12
TROUBLESHOOTING	13
ERROR CODES	13
WIRING DIAGRAM 323-4540 ODIN 10	15
WIRING DIAGRAM 323-4545 ODIN 15	16
EXPLODED VIEW: 323-4540 ODIN 10	17
EXPLODED VIEW - LEGEND 323-4540 ODIN 10	18
EXPLODED VIEW: 323-4545 ODIN 15	20
EXPLODED VIEW - LEGEND 323-4545 ODIN 15	21
PACKAGING DISPOSAL	23
DEVICE DISPOSAL	23

Dear Customer,

Congratulations on your new SARO blast freezer.

The product you have purchased has been designed for commercial use in restaurants, hotels, cafés, canteens, and supermarkets.

It is used for rapid cooling and deep-freezing of freshly prepared food.

The blast chiller is particularly suitable for bringing food down to safe storage temperatures in a short time, preserving quality and significantly extending shelf life.

Please read this operating manual carefully before commissioning the unit.

We wish you much success and enjoyment with your new SARO product.

SCOPE OF DELIVERY

- 1 blaster freezer
- 1 operating manual

STANDARDS AND DIRECTIVES

The device complies with the current EU standards and directives:

Machinery Directive – MD 2006/42/EC,

Electromagnetic Compatibility Directive – EMC 2014/30/EU,



RoHS Directives 2011/65/EU and 2015/863/EU,

Ecodesign requirements according to Regulation (EU) 2015/1095 and

Energy labelling according to Regulation (EU) 2015/1094.

The corresponding Declaration of Conformity can be provided upon request.

TECHNICAL OVERVIEW

Blaster freezer		
Model	ODIN 10	ODIN 15
Order No.	323-4540	323-4545
Material	Housing and interior: stainless steel Bottom outside: galvanized steel	
Door(s)	1, self-closing	
Lock	without	
Tray size	Suitable for trays 600 x 400 mm	
On/Off switch	Yes, programmable touch display	
Power connection	Ready-to-plug with safety plug (Schuko plug)	
Temperature control	EVCO thermostat	
Insulation	70 mm	
Cooling system	Forced-air cooling	
Defrosting	Automatic defrosting with hot gas	
Feet	4 adjustable feet, H 110-170 mm	
Temperature range	Blast chilling: +65°C to +10°C in 85 min Blast freezing: +65°C to -18°C in 183 min	Blast chilling: +65°C to +10°C in 113,5 min Blast freezing: +65°C to -18°C in 190 min
Tray capacity per tray	Blast chilling: max. 40 kg Blast freezing: max. 28 kg	Blast chilling: max. 55 kg Blast freezing: max. 38 kg
Gross volume	368 Liter	494 Liter
Refrigerant / Qty.	R290 (GWP 3) / 0,150 kg 	R290 (GWP 3) / 0,150 kg 
Connection	230 V / 50 Hz / 0,0,900 kW	400 V – 50/60 Hz – 9 Ph – 2 kW
Internal dimensions	W 440 x D 695 x H 870 mm	W 440 x D 695 x H 1170 mm
External dimensions	W 800 x D 873 x H 1665 mm	W 800 x D 873 x H 1950 mm
VO EU Regulation	VO (EU) 2015/1094 – Commercial refrigeration units Group: blast chiller	
Net/Gross weight	150 kg / 190 kg	210 kg / 243 kg
GTIN (EAN code)	4017337071111	4017337071128

SYMBOL EXPLANATIONS



WARNUNG!

Dieses Symbol kennzeichnet Gefahren, die zu Verletzungen führen können. Halten Sie die angegebenen Hinweise zur Arbeitssicherheit unbedingt genau ein und verhalten Sie sich in diesen Fällen besonders vorsichtig.

WARNING!

This symbol indicates hazards that may cause injuries. Always follow the specified safety instructions precisely and exercise extra caution in these situations.



WARNUNG: GEFAHR DURCH ELEKTRISCHEN STROM!

Dieses Symbol macht auf gefährliche Situationen durch elektrischen Strom aufmerksam. Bei Nichtbeachten der Sicherheitshinweise besteht Verletzungs- oder Lebensgefahr!

WARNING: DANGER OF ELECTRIC SHOCK!

This symbol warns of hazardous situations caused by electric current. Failure to follow the safety instructions may result in injury or death!



WARNUNG: HEISSE OBERFLÄCHE - VERBRENNUNGSGEFAHR

Dieses Symbol weist auf die heiße Oberfläche des Gerätes, während des Betriebes und danach hin. Verbrennungsgefahr bei Nichtbeachten!

WARNING: HOT SURFACE - RISK OF BURNS

This symbol indicates the hot surface of the device during and after operation. Risk of burns if not observed!



WARNUNG: FEUERGEFÄHRliche STOFFE - VERBRENNUNGSGEFAHR

Dieses Symbol weist darauf hin, dass Gefahren aufgrund von feuergefährlichen Stoffen für Leben und Gesundheit von Personen bestehen. Verbrennungsgefahr bei Nichtbeachten!

WARNING: FLAMMABLE SUBSTANCES - RISK OF BURNS

This symbol indicates that flammable substances pose a danger to life and health. Risk of burns if not observed!

GENERAL INSTRUCTIONS

- Keep this operating manual handy near the appliance.
- The manufacturer/dealer cannot be held responsible for any damage resulting from failure to follow this manual.
- Failure to follow this manual will void the safety of the appliance.
- If the appliance is passed on to third parties, this operating manual must be included.
- This appliance must not be operated by children or persons with reduced physical, sensory, or mental capabilities, as they may not recognize the hazards of using electrical and/or refrigeration appliances, which could lead to accidents, fire, explosions, or property damage.
- After unpacking the appliance, make sure everything is in perfect condition. If you discover any damage, do not connect the appliance to the power supply; instead, contact your dealer.
- Check whether all components listed in the scope of delivery are present. If not, contact your dealer.
- Keep the appliance packaging. Only in its original packaging can the appliance be transported safely (e.g. for repair purposes, during relocation, etc.). Please note that all packaging components (plastic bags, cardboard, styrofoam parts, etc.) can be dangerous for children and must not be stored within their reach.
- If storing the packaging is not possible, separate the different packaging materials and take them to the nearest collection point for proper disposal.
- Do not use the appliance outdoors in the rain or in damp rooms.
- Do not operate the appliance unattended.
- Observe applicable accident prevention regulations and general safety standards for the area of use.
- Install the appliance in a dry, well-ventilated location on a level, stable surface.
- Ensure at least 10 cm of clearance between the rear of the display cabinet and the wall. Otherwise, the required cooling performance cannot be guaranteed.
- Do not install the appliance near heat sources such as heaters, stoves, ovens, open flames, or in direct sunlight, as this will affect the cooling performance.
- Ventilation slots must always be kept clear and must not be covered or obstructed.
- Before commissioning, observe the recommended ambient temperatures (climate class) for optimal cooling performance.
- Before connecting to the power supply and before commissioning, clean the appliance thoroughly as described under "Cleaning."
- Before connecting the appliance, make sure that a grounded socket (Schuko) with 230 volts is available and that this matches the information on the rating plate. Power sources other than those indicated on the rating plate may cause overheating or defects in the appliance.
- Do not drill or pierce holes in the interior or exterior of the appliance, as this could damage the cooling system.
- For hygiene reasons, daily cleaning is recommended during operation.
- Always disconnect the appliance from the power supply before cleaning. Switch off the appliance first if it has an on/off switch or a thermostat with an "off" setting. Do the same if the appliance is not used for an extended period.
- The manufacturer/dealer cannot be held responsible for any damage resulting from failure to follow this manual. The safety of the appliance will also no longer be guaranteed.
- In the event of a malfunction/failure, disconnect the appliance from the power supply and contact your dealer. Repairs will be carried out with original spare parts by or on behalf of the dealer.

SAFETY INSTRUCTIONS

- Improper use and mishandling can lead to malfunctions of the appliance and injuries to the user.
- This appliance is neither suitable nor intended for storing medicines or flammable, combustible, or explosive substances.
- Observe the applicable accident prevention regulations and general safety standards for the area of use.
- Ensure a stable position on a dry, slip-resistant surface suitable for the appliance's weight, and install it in a well-ventilated location.
- Do not expose the appliance to direct sunlight, do not place it near heat sources (heater, stove, oven, open fire), and do not place it on hot surfaces, as this will affect cooling performance.
- Do not store flammable or explosive substances near the appliance.
- Do not carry out work with flammable substances near the appliance (such as paint or spray paint). Otherwise, fire or explosion may occur.



- The appliance requires sufficient space for air circulation and cooling: 10 cm on each side and at the back.
- Do not place heavy objects, loads, or liquids on the appliance.
- Ensure that the appliance's air inlet and outlet openings are always free of dirt. Check them regularly and remove any dust deposits using a vacuum cleaner.
- Do not cover or block the air openings.
- Do not tilt the appliance more than 45 degrees.
- Before connecting to your power supply, check whether the type of current and mains voltage correspond to the information on the rating plate. Operation is only possible if they match, in order to avoid accidents or defects.



- Do not use adapters, multiple sockets, or extension cords; otherwise, cables/wires may quickly overheat, especially if other appliances are connected. This increases the risk of fire.
- Do not move the appliance while it is in operation.
- Before moving the appliance, switch it off (if a switch is available) and unplug it.
- Always unplug by pulling on the plug housing, never the cable.
- Make sure the appliance does not tip over when being moved, as this may cause injuries.
- Once the appliance is set up again, wait 2 hours before switching it back on.
- If transported over a longer distance, allow the appliance to stand for approx. 24 hours before commissioning to prevent damage or accidents.
- After a power failure or after unplugging briefly, switch the appliance off, wait 5 minutes, then plug it back in and restart it.
- Do not let the power cord hang over sharp edges, do not crush it, and keep it away from hot objects and open flames.
- Ensure the cord cannot be pulled accidentally or tripped over.
- Check the cord regularly. If damaged, e.g. crushed, it must be replaced by a qualified technician.
- Do not touch the appliance, cord, or plug with wet or damp hands.
- Caution! The appliance remains live as long as it is connected to the mains.
- Protect the appliance from moisture.
- Do not clean the appliance with a water jet.
- The appliance must not be immersed in water or other liquids or splashed with liquids. If the appliance does get wet, unplug it immediately and have it inspected by a qualified technician before reuse. Danger of electric shock!



- A damaged appliance must not be used! Disconnect it from the mains and contact your dealer.
- Never attempt to open or repair the appliance yourself. Danger to life!
- Do not touch the compressor, as it may cause burns.
- Do not drill or puncture the appliance, neither from outside nor inside.
- Do not install other devices in the refrigeration unit and do not attach foreign objects.
- Do not interfere with the refrigeration circuit! This must only be done by a professional. Refrigerants R600a and R290 are environmentally friendly, but they are colorless, almost odorless, flammable gases; heavier than air; and in high concentrations narcotic and asphyxiating.
- Repairs must be carried out by qualified personnel using original spare parts.
- Always disconnect the appliance from the mains before cleaning and also during longer periods of non-use.
- Keep the door open only briefly to maintain the internal temperature.

DEVICE INSTALLATION

Place the appliance in a dry and well-ventilated room. Ensure a stable position on a dry, slip-resistant surface.

Position the appliance at least 10 cm away from the wall at the back to allow sufficient air circulation at all times. Leave at least 20 cm of space above the appliance and 2,5 cm on each side.

Performance and energy consumption may be affected by ambient temperature or direct sunlight. Therefore, do not expose the appliance to direct sunlight and do not place it near a stove, radiator, or any other heat source.

Ensure that the power plug is always easily accessible and can be disconnected from the mains without difficulty.

Arrange the appliance's shelves so that the spacing corresponds to the height of your stored goods.



After delivery or transportation of the appliance, do not connect it to the power supply until it has been left to stand for at least 24 hours. This is absolutely necessary to allow the refrigerant to settle in the compressor.

ELECTRICAL CONNECTION

After long transportation, the appliance should only be put into operation after 24 hours, and likewise after being strongly tilted. This allows the refrigeration circuit to stabilize and the refrigerant to redistribute evenly, preventing defects or malfunctions. After short movement or tilting of less than 45 degrees, please wait 2 hours before connecting the appliance.

Before connecting the appliance, make sure that the voltage and frequency of the power supply match the information on the rating plate! Using a different voltage may cause the appliance to overheat.

Connect the appliance only to a grounded socket with protective contact and a 230-volt connection.

Once the appliance is connected, wait about one hour to allow the interior to cool down sufficiently before loading it with goods. After a power failure or if the appliance has been disconnected from the mains, wait at least 5 minutes before reconnecting and restarting the appliance!

If the appliance is restarted immediately after being switched off, the fuse may trip and interrupt the power supply. In addition, the compressor may become overloaded and damaged.

STRUCTURE AND COMPONENTS



INITIAL START-UP

Before first use:

Unpack the appliance, check it for completeness, and set it up (see *Installation*). Clean the appliance (see *Cleaning*). Connect the cleaned refrigeration unit (see *Electrical connection*) to a 230 V socket. Only once the desired temperature has been reached (place your hand on the air intake to ensure it is sufficiently cold), load the appliance with your goods.

OPERATION – SETTINGS



Setup & Preparation

1. Unpack the unit – remove all films and protective coatings.
2. Maintain minimum clearances:
 - 2,5 cm on each side
 - 20 cm above
 - Never place the unit near a heat source.
3. Before first use, clean the interior with soapy water and dry thoroughly.
4. Lock the brakes on the castors.

Operation – Storing Food

- The temperature of the products must not exceed 90°C.
- Preferably use metal containers (no styrofoam or plastic).
- Leave sufficient space between the products to ensure proper air circulation.
- Never block the evaporator fan.
- Place larger or high-fat products in the center.
- Standard size: maximum thickness of 50 mm. Do not stack larger pieces.
- Open doors only briefly.
- Use the blast chiller for short-term storage only.
- Wear gloves when removing frozen products.

Using the Food Probe

- Before starting, the probe must be inserted into the food – otherwise, no measurement will be taken.
- Connect the probe correctly, otherwise an alarm will occur.
- Disinfect the probe needle after each use.

Operating Modes

- **Off:** No Power supply
 - **Standby:** Unit is connected to power but turned off
 - **On:** Unit is powered and waiting to start
 - **Operation:** Unit is running a cycle
-

Switching On & Starting

1. Connect the unit to the power supply.
2. Press the central field on the display → standby mode.
3. Press the central field again → the unit starts.
4. To switch off, press the lower field.



Note:

- „Switch on“ = from standby to „on“
 - „Switch off“ = from „on“ to standby.
-

Setting the Language

1. Open the settings menu on the start screen.
 2. Select the menu item **Language**.
 3. Choose the desired language and confirm.
(Default: English)
-

Additional Functions

- **Unlocked keypad:** Swipe right with your finger.
- **Mute buzzer:** Press any key.
- **Door open signal:** Tap the display to stop the notification.

CLEANING

Wipe the exterior and interior surfaces with a damp, soft cloth.

A mild dishwashing detergent may be used.

Wipe again with clean water (without detergent), then dry thoroughly.

The glass shelves can be removed for easier cleaning; clean them in the same way.

Do not use harsh, bleaching, caustic, or abrasive cleaning agents/tools, as these may damage or scratch the surfaces.

For the glass surfaces, a standard glass cleaner and a soft cloth may also be used. However, ensure that only the glass is moistened and that no large amounts of liquid run into the cabinet.

MAINTENANCE

The refrigeration unit requires very little maintenance. Approximately every 2 months, check the ventilation slots for dirt. Brush them off with a soft brush while simultaneously removing the dirt with a vacuum cleaner.

TAKING DEVICE OUT OF OPERATION / STORAGE / TRANSPORT

Remove all food, switch off the appliance, and unplug it.

Clean the appliance thoroughly inside and outside, then leave the door open to allow sufficient drying.

If the appliance is dry and will not be used for an extended period, store it in a dry, dust-free, and cool place. Ideally, cover the appliance or use the original packaging to protect it from damage.

Ensure the appliance is secured against children or pets climbing inside, as this could result in entrapment.

If only the packaging materials are stored, please note that components such as plastic bags, cardboard, and styrofoam parts can be dangerous for children if they play with them unsupervised (e.g., risk of suffocation).

For transportation, use the original packaging to optimally protect the appliance against shocks, sharp edges, weather conditions, etc. Do not tilt the appliance more than 45 degrees, do not expose it to moisture or rain, and avoid heavy impacts.

After transportation, the appliance must stand still for approx. 24 hours before being reconnected. Otherwise, malfunctions may occur, as the refrigerant and oil need time to redistribute and settle correctly.

TROUBLESHOOTING

Problem	Cause and Solution
The unit does not work	<ul style="list-style-type: none"> - The unit is not switched on → Check whether the plug is connected to the socket and the unit is turned on. - Plug or cable is damaged → Replace plug or cable. - Power supply failure → Check the power supply.
Water is leaking from the unit	<ul style="list-style-type: none"> - The unit is not positioned properly → Adjust the feet to level the unit. - The drain outlet is blocked → Clean the drain outlet. - Water cannot drain → Check the bottom of the unit (→ tilt if necessary). - The water container is damaged → Contact a qualified technician.
The unit is unusually noisy	<ul style="list-style-type: none"> - The unit is not installed on a stable surface → Check the unit's position and level it if necessary. - Loose nut/screw → Check and tighten all nuts and screws.
The unit does not cool	<ul style="list-style-type: none"> - Incorrect program → Change the program. - The filter is clogged → Clean the filter.
The food temperature is not detected	<ul style="list-style-type: none"> - The food probe is defective → Purchase a new food probe from your local distributor.
The food is not soft after removing from the blast freezer	<ul style="list-style-type: none"> - The selected cycle is not suitable for the food → Change the cycle from hard freezing to soft freezing (→ select a cycle).
The unit beeps and a message appears on the control panel	<ul style="list-style-type: none"> - There is a problem with the unit, indicated by a control alarm → See error codes.
If the problem cannot be solved by these simple troubleshooting steps, please contact your dealer.	

The following are not malfunctions:

The sound of running water may be heard when the refrigeration unit is operating. This is normal, as the refrigerant is circulating within the system.

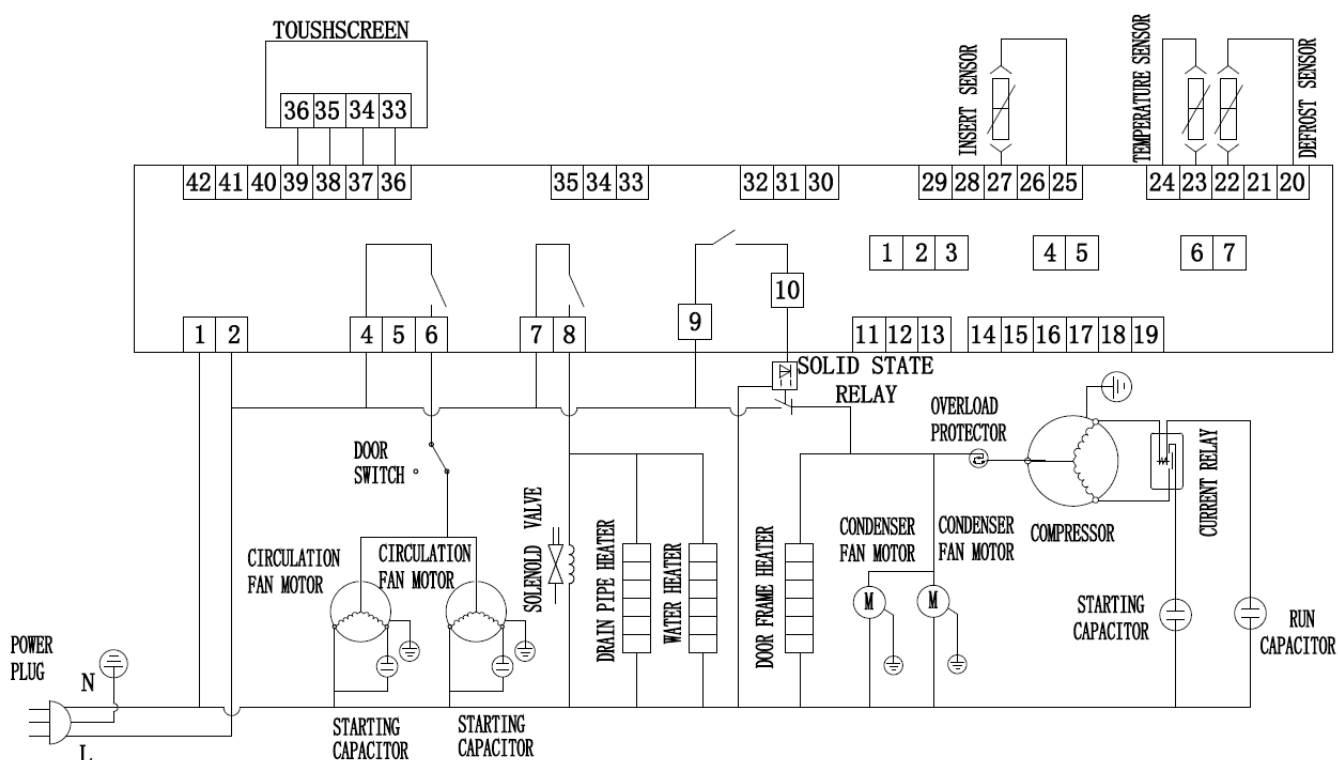
During damp weather, condensation may form on the outside of the appliance. This is not a malfunction; the cause is high humidity. Simply wipe off the condensation with a cloth

ERROR CODES

Error code	Meaning and Action
RTC	<ul style="list-style-type: none"> - Clock error → Set the date and time again
CABINET PROBE	<ul style="list-style-type: none"> - Cabinet probe error <ul style="list-style-type: none"> ➤ Check if the probe is undamaged ➤ Check the connection of the cabinet probe ➤ Check the cabinet temperature ➤ If the problem persists, contact your dealer
EVAPORATOR PROBE	<ul style="list-style-type: none"> - Evaporator probe error → same as for the cabinet probe error, but concerning the evaporator probe
CONDENSER PROBE	<ul style="list-style-type: none"> - Condenser probe error → Same as for the cabinet probe error, but concerning the condenser probe
NEEDLE PROBE SENSOR 1/2/3	<ul style="list-style-type: none"> - Needle probe sensor error 1/2/3 → Same as the cabinet probe error, but concerning the needle probe sensor
NEEDLE PROBE	<ul style="list-style-type: none"> - Needle probe error (all active needle probes are shown in the alarm status) → Same as for the cabinet probe error, but concerning the needle probes
NEEDLE PROBE INSERTION	<ul style="list-style-type: none"> - Door open alarm → Check whether all needle probes are correctly inserted
DOOR OPEN	<ul style="list-style-type: none"> - Door open alarm → Check the door seal

HIGH TEMPERATURE	- Maximum temperature alarm (HACCP alarm) → Check the cabinet temperture
LOW TEMPERATURE	- Minimum temperature alarm (HACCP alarm) → Check the cabinet temperature
POWER FAILURE	- Power failure alarm → Check the power supply connection of the unit

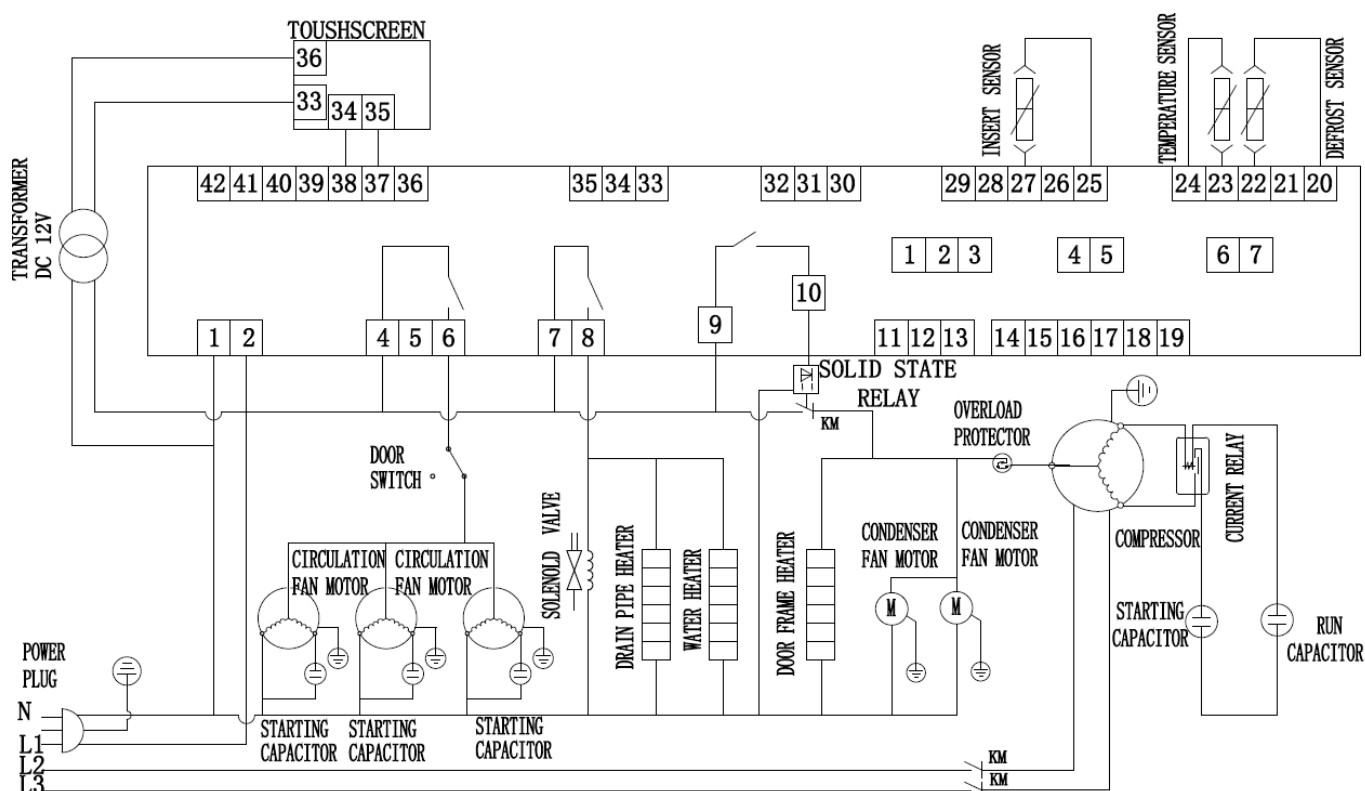
WIRING DIAGRAM 323-4540 ODIN 10



Übersetzung zum Schaltplan:

Englischer Begriff	Deutscher Begriff
Power Plug	Netzstecker
L (Line)	Phase (L)
N (Neutral)	Neutralleiter (N)
Door Switch	Türschalter
Circulation Fan Motor	Umluftventilator-Motor
Starting Capacitor	Anlaufkondensator
Solenoid Valve	Magnetventil
Drain Pipe Heater	Abflussrohrheizung
Water Heater	Wasserheizung
Door Frame Heater	Türrahmenheizung
Solid State Relay	Halbleiterrelais
Condenser Fan Motor	Verflüssigerlüfter-Motor
Compressor	Kompressor
Overload Protector	Überlastschutz
Current Relay	Anlaufrelais
Run Capacitor	Betriebskondensator
Insert Sensor	Produktsensor (Einschubfühler)
Temperature Sensor	Temperatursensor
Defrost Sensor	Abtausensor
Touchscreen	Touchscreen-Bedienfeld
Operating Indicator	Betriebsanzeige

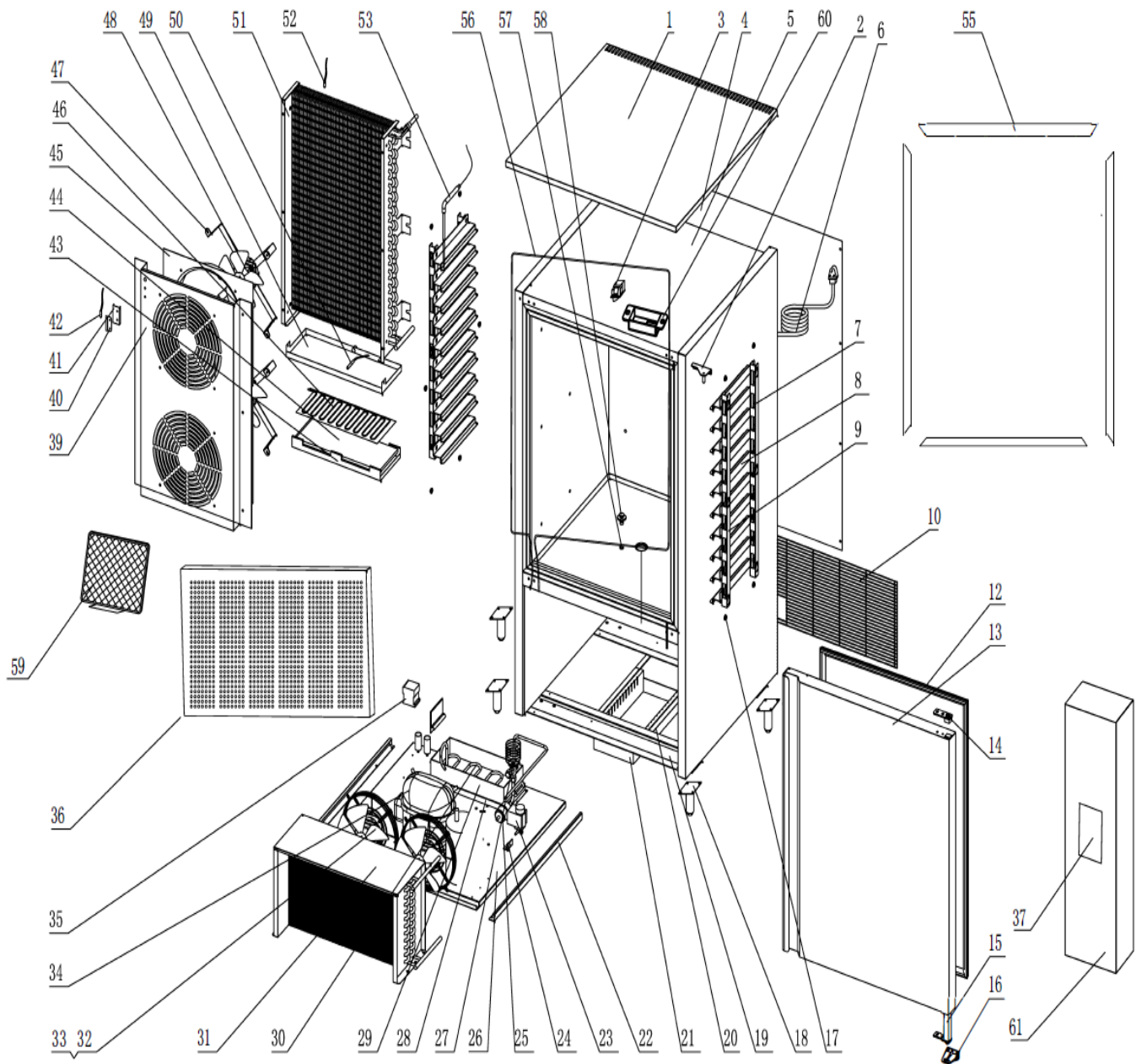
WIRING DIAGRAM 323-4545 ODIN 15



Übersetzung zum Schaltplan:

Englischer Begriff	Deutscher Begriff
Power Plug	Netzstecker
N (Neutral)	Neutralleiter
L1 / L2 / L3	Phasen (Drehstrom)
Transformer DC 12V	Transformator DC 12V
Touchscreen	Touchscreen-Bedienfeld
Door Switch	Türschalter
Circulation Fan Motor	Umluftventilator-Motor
Starting Capacitor	Anlaufkondensator
Solenoid Valve	Magnetventil
Drain Pipe Heater	Abflussrohrheizung
Water Heater	Wasserheizung
Door Frame Heater	Türrahmenheizung
Solid State Relay (SSR)	Halbleiterrelais
Condenser Fan Motor	Verflüssigerlüfter-Motor
Compressor	Kompressor
Overload Protector	Überlastschutz
Current Relay	Anlaufrelais
Run Capacitor	Betriebskondensator
Insert Sensor	Produktsensor (Einschubfühler)
Temperature Sensor	Temperatursensor
Defrost Sensor	Abtausensor

EXPLODED VIEW: 323-4540 ODIN 10

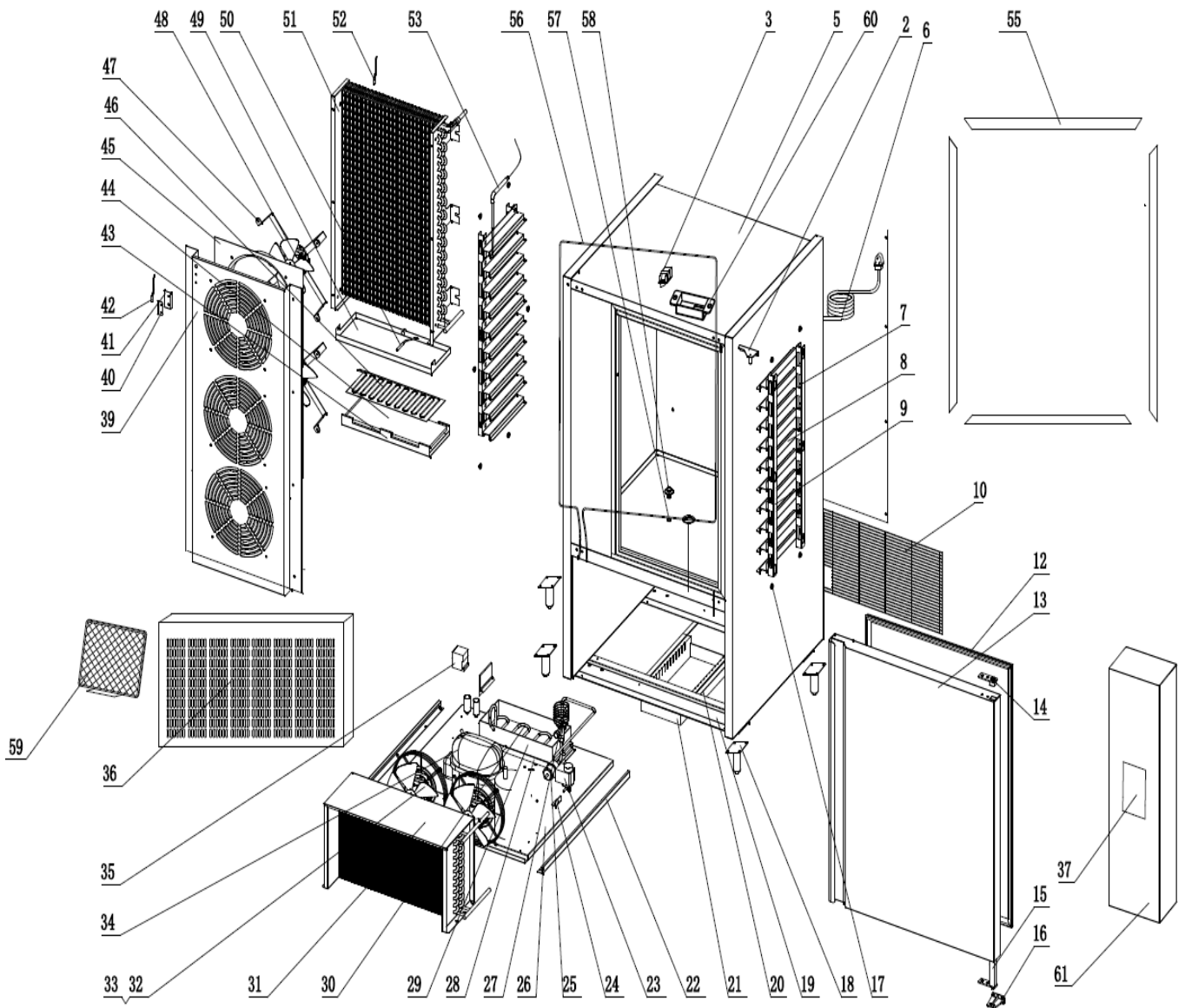


EXPLODED VIEW - LEGEND 323-4540 ODIN 10

1	Top	Deckel / Oberteil
2	Right door hinge	Rechtes Türscharnier
3	Door switch	Türschalter
4		Rückwand
5	Body	Gehäuse / Korpus
6	Plug	Zuleitung
7	Back support left	Hinterer Träger links
	Back support right	Hinterer Träger rechts
8	Guide left	Laufleiste links
	Guide right	Laufleiste rechts
9	Front support right	Vorderer Träger rechts
	Front support left	Vorderer Träger links
10	Unit room grill	Geräteraumgitter
12	Door seal	Türdichtung
13	Door (door with handle)	Tür (mit Griff)
14	Down hinge axis jacket	Türbolzenaufnahme
15	Door spring hinge	Türfeder-Scharnier
16	Door hinge	Unteres Türscharnier
17	Support tray nut	Befestigungsmutter Für Träger
18	Braked castor	Fuß
19	Unit support board	Stützplatte Geräteeinheit
20	Water box guide	Wasserbox-Führung
21	Water box	Wasserbox
22	Guide right	Führungsschiene für Montageplatte rechts
	Left guide	Führungsschiene für Montageplatte links
23	Solenoid valve	Magnetventil
24	Solenoid valve fixed clip	Halteclip Magnetventil
25	Filter drier	Filtertrockner
26	Unit board	Montageplatte
27	Thermostatic expansion valve	Thermostatisches Expansionsventil
28	Protector for water pan	Schutz für Verdunsterwanne
29	Water pan	Verdunsterwanne
30	Discharge pipe	Heißgasrohr
31	Condenser	Verflüssiger (Kondensator)
32	Condenser fan	Kondensatorlüfter
	Condenser fan	Kondensatorlüfter
33	Basket guard grills	Schutzgitter für Lüfter
34	Compressor	Kompressor
35	AC contactor	Schütz (AC)
36	Front panel	Frontblende
37	Thermostat	Thermostat / Steuerung
39	Condenser fan	Innenraumlüftungsgitter
40	Sensor fixed clip	Fühlerhalterung
41	Probe padding	Polsterung für Fühler
42	Room temperature sensor	Raumtemperaturfühler
43	Inside bottom pan	Innere Bodenwanne

44	Heat preservation foam	Isolierplatte
45	Airflow conduct board	Luftleitplatte
46	Heater	Heizelement
47	Circuit fan support	Verdampferlüfter-Halterung
48	Circuit fan	Verdampferlüfter
49	Evaporator water pan	Tauwasserwanne
50	Drain heater	Heizkabel für Auslauf
51	Evaporator	Verdampfer
52	Defrosting sensor	Abtaufühler
53	Insert sensor	Einsteckfühler / Kerntemperaturfühler
55	Plastic frame cover	Kunststoff Rahmenabdeckung
56	Heating element	Rahmenheizelement
57	Sealing ring	Dichtungsring
58	Drain pipe cover	Ablassrohr mit Abdeckung
59	Filter screen	Luftfilter
60	Door switch box	Türschalterkasten
61	Left front panel	Linke Frontblende

EXPLODED VIEW: 323-4545 ODIN 15



EXPLODED VIEW - LEGEND 323-4545 ODIN 15

1	Top	Deckel / Oberteil
2	Right door hinge	Rechtes Türscharnier
3	Door switch	Türschalter
5	Body	Gehäuse / Korpus
6	Plug	Zuleitung
7	Back support left	Hinterer Träger links
	Back support right	Hinterer Träger rechts
8	Guide left	Laufleiste links
	Guide right	Laufleiste rechts
9	Front support right	Vorderer Träger rechts
	Front support left	Vorderer Träger links
10	Unit room grill	Geräteraumgitter
12	Door seal	Türdichtung
13	Door (door with handle)	Tür (mit Griff)
14	Down hinge axis jacket	Türbolzenaufnahme
15	Door spring hinge	Türfeder-Scharnier
16	Door hinge	Unteres Türscharnier
17	Support tray nut	Befestigungsmutter Für Träger
18	Braked castor	Fuß
19	Unit support board	Stützplatte Geräteeinheit
20	Water box guide	Wasserbox-Führung
21	Water box	Wasserbox
22	Guide right	Führungsschiene für Montageplatte rechts
	Left guide	Führungsschiene für Montageplatte links
23	Solenoid valve	Magnetventil
24	Solenoid valve fixed clip	Halteclip Magnetventil
25	Filter drier	Filtertrockner
26	Unit board	Montageplatte
27	Thermostatic expansion valve	Thermostatisches Expansionsventil
28	Protector for water pan	Schutz für Verdunsterwanne
29	Water pan	Verdunsterwanne
30	Discharge pipe	Heißgasrohr
31	Condenser	Verflüssiger (Kondensator)
32	Condenser fan	Kondensatorlüfter
	Condenser fan	Kondensatorlüfter
33	Basket guard grills	Schutzgitter für Lüfter
34	Compressor	Kompressor
35	AC contactor	Schütz (AC)
36	Front panel	Frontblende
37	Thermostat	Thermostat / Steuerung
39	Condenser fan	Innenraumlüftungsgitter
40	Sensor fixed clip	Fühlerhalterung
41	Probe padding	Polsterung für Fühler
42	Room temperature sensor	Raumtemperaturfühler
43	Inside bottom pan	Innere Bodenwanne
44	Heat preservation foam	Isolierplatte

45	Airflow conduct board	Luftleitplatte
46	Heater	Heizelement
47	Circuit fan support	Verdampferlüfter-Halterung
48	Circuit fan	Verdampferlüfter
49	Evaporator water pan	Tauwasserwanne
50	Drain heater	Heizkabel für Auslauf
51	Evaporator	Verdampfer
52	Defrosting sensor	Abtaufühler
53	Insert sensor	Einsteckfühler / Kerntemperaturfühler
55	Plastic frame cover	Kunststoff Rahmenabdeckung
56	Heating element	Rahmenheizelement
57	Sealing ring	Dichtungsring
58	Drain pipe cover	Ablassrohr mit Abdeckung
59	Filter screen	Luftfilter
60	Door switch box	Türschalterkasten
61	Left front panel	Linke Frontblende

PACKAGING DISPOSAL



Please separate the packaging materials accordingly and take them to the appropriate collection points for recycling and environmental protection.

DEVICE DISPOSAL



Once the appliance has reached the end of its life, please dispose of it properly at a designated collection point for electrical devices.
Electrical appliances do not belong in household waste.
Your local authority can provide information on the locations and opening hours of disposal sites.
This is the only way to ensure that old appliances are disposed of and recycled correctly.
Thank you!

Made in P.R.C for:

SARO Gastro-Products GmbH
Sandbahn 6, 46446 Emmerich am Rhein, Germany
Tel. +49 (0) 2822 9258-0
Fax +49 (0) 2822 18192
E-Mail info@saro.de
Web www.saro.de