

Operating manual

Commerical Refrigerators Models GN 700 TN PRO / GN 1410 TN PRO

Item-No.: 323-1420 / 323-1425



330-1420
GN 700 PRO



330-1425
GN 1410 TN PRO

TABLE OF CONTENTS

SCOPE OF DELIVERY	3
STANDARDS AND DIRECTIVES.....	3
TECHNICAL OVERVIEW	4
SYMBOL EXPLANATIONS	5
GENERAL INSTRUCTIONS	6
SAFETY INSTRUCTIONS.....	7
SAFETY INSTRUCTIONS.....	8
ELECTRICAL CONNECTION	8
STRUCTURE AND COMPONENTS	9
INITIAL START-UP.....	9
OPERATION – SETTINGS.....	10
CLEANING.....	11
MAINTENANCE	11
TAKING COOLING CABINET OUT OF OPERATION / STORAGE / TRANSPORT	11
TROUBLESHOOTING	12
WIRING DIAGRAM.....	13
EXPLODED VIEW DRAWING: 323-1420 (GN 700 PRO).....	14
EXPLODED VIEW DRAWING – LEGEND: 323-1420 (GN 700 PRO)	15
EXPLODED VIEW DRAWING: 323-1425 (GN 1410 PRO)	17
EXPLODED VIEW DRAWING – LEGEND: 323-1425 (GN 1410 PRO).....	18
PACKAGING DISPOSAL.....	20
DEVICE DISPOSAL	20

Dear Customer,

Congratulations on the purchase of your new SARO commercial refrigerator.

This appliance has been specifically designed for professional use in food service establishments such as restaurants, hotels, canteens, cafés, and supermarkets. It stands out due to its high cooling performance and robust stainless steel construction, ideal for daily, continuous commercial use.

Please read this operating manual carefully before putting the appliance into operation. This is the only way to ensure safe usage as well as reliable and efficient operation.

Thank you for placing your trust in us. We wish you much success and satisfaction with your new SARO product.

Your SARO Team

SCOPE OF DELIVERY





- 1 commercial refrigerator
- 1 operating manual

STANDARDS AND DIRECTIVES

The device complies with the current EU standards and directives:
Machinery Directive – MRL 2006/42/EC,
Electromagnetic Compatibility Directive – EMC 2014/30/EU,
RoHS Directives 2011/65/EU and 2015/863/EU,
Ecodesign requirements according to Regulation (EU) 2015/1095, and
Energy Labelling according to Regulation (EU) 2015/1094.

The corresponding Declaration of Conformity can be provided upon request.

TECHNICAL OVERVIEW

Commercial Refrigerators		
Models	GN 700 TN PRO	GN 1410 TN PRO
Order No.	323-1420	323-1425
Material	(Housing): Stainless steel AISI-430, (Interior): Stainless steel AISI-304	
Door(s)	1, door hinge reversible	2
Lock	Yes	
Shelves	3 shelves, height adjustable 1 bottom shelf	6 shelves, height adjustable 1 bottom shelf
Shelf dimensions	3x W=530×D=650 mm 1x W=510×D=605 mm (bottom)	6x W=530×D=650 mm 2x W=510×D=605 mm (bottom)
Load capacity	Up to approx. 25 kg per shelf	
Shelf adjustment	up to 80 mm minimum distance possible	
On/Off switch	Yes	
Connection	Plug-in ready with Schuko plug	
Lighting	LED interior lightning, seperately switchable This product contains a light source with energy efficiency class G.	
Temperature control/display	Digital (DIXELL)	
Insulation	100 mm	90 mm
Cooling type	Forced air cooling	
Defrosting	Automatic defrost & automatic evaporation of condensation water	
Feet	4 (height adjustable)	
Temperature range	-2° / +8 °C	
Capacity gross/net	560 / 408 liters	1300 / 940 liters
Refrigerant/Amount	R600a (GWP 3) / 100 g 	R600a (GWP 3) / 95 g 
Connection	230 V - 50 Hz - 0,070 kW	230 V - 50 Hz - 0,130 kW
External dimensions	W=740×D=875×H=2090 mm	W=1420×D=875×H=2090 mm
Internal dimensions	W=533×D=700×H=1501 mm	W=1240×D=700×H=1501 mm
Climate class	Suitable for climate class 5 High performance device	
EU Energy Label	Regulation (EU) 2015/1094 – Commercial refrigeration cabinets, Group: Vertical storage refrigeration cabinets	
Energy efficiency class / EEI	A (Scale A+++ to G) / 21,7 % 	A (Scale A+++ to G) / 22,2 % 
Energy consumption per year/day	277,40 kWh / 0.760 kWh	478,15 kWh / 1.310 kWh
Weight net/gross	134 / 143 kg	198 / 213 kg
GTIN [EAN-Code]	4017337068036	4017337068043

SYMBOL EXPLANATIONS



WARNUNG!

Dieses Symbol kennzeichnet Gefahren, die zu Verletzungen führen können. Halten Sie die angegebenen Hinweise zur Arbeitssicherheit unbedingt genau ein und verhalten Sie sich in diesen Fällen besonders vorsichtig.

WARNING!

This symbol indicates hazards that may cause injuries. Always follow the specified safety instructions precisely and exercise extra caution in these situations.



WARNUNG: GEFAHR DURCH ELEKTRISCHEN STROM!

Dieses Symbol macht auf gefährliche Situationen durch elektrischen Strom aufmerksam. Bei Nichtbeachten der Sicherheitshinweise besteht Verletzungs- oder Lebensgefahr!

WARNING: DANGER OF ELECTRIC SHOCK!

This symbol warns of hazardous situations caused by electric current. Failure to follow the safety instructions may result in injury or death!



WARNUNG: HEISSE OBERFLÄCHE - VERBRENNUNGSGEFAHR

Dieses Symbol weist auf die heiße Oberfläche des Gerätes, während des Betriebes und danach hin. Verletzungs- oder Lebensgefahr bei Nichtbeachten!

WARNING: HOT SURFACE - RISK OF BURNS

This symbol indicates the hot surface of the device during and after operation. Risk of burns if not observed!



WARNUNG: FEUERGEFÄHRliche STOFFE - VERBRENNUNGSGEFAHR

Dieses Symbol weist darauf hin, dass Gefahren aufgrund von feuergefährlichen Stoffen für Leben und Gesundheit von Personen bestehen. Verletzungs- oder Lebensgefahr bei Nichtbeachten!

WARNING: FLAMMABLE SUBSTANCES - RISK OF BURNS

This symbol indicates that flammable substances pose a danger to life and health. Risk of burns if not observed!

GENERAL INSTRUCTIONS

- Keep this operating manual readily accessible near the appliance.
- The manufacturer/supplier cannot be held liable for any damage resulting from failure to follow this operating manual.
- Failure to comply with this manual will void the safety of the appliance.
- When passing the appliance on to a third party, this operating manual must be handed over as well.
- This appliance must not be operated by children or persons with reduced physical, sensory, or mental capabilities, as they may not recognize the dangers associated with using electrical and/or refrigeration appliances. This could result in accidents, fire, explosions, or property damage.
- After unpacking the appliance, make sure everything is in perfect condition. If you discover any damage, do not connect the appliance. Instead, contact your dealer.
- Check whether all components listed in the delivery scope are present. If not, contact your dealer.
- Keep the packaging of the appliance. The appliance can only be transported safely in its original packaging — for example, for repairs or relocation. Note that all packaging materials (plastic bags, cardboard, Styrofoam parts, etc.) can pose a danger to children and must not be stored near them.
- If keeping the packaging is not possible, separate the different packaging materials and take them to the nearest collection point for proper disposal.
- Do not use the appliance outdoors in the rain or in damp environments.
- Do not operate the appliance unattended.
- Observe the accident prevention regulations and general safety rules applicable to the area of use.
- Place the appliance in a dry, well-ventilated area on a flat, stable surface.
- Ensure there is at least 10 cm of clearance between the back of the refrigerator and the wall. Otherwise, the desired cooling performance cannot be guaranteed.
- Do not place the appliance near heat sources such as radiators, stoves, ovens, open flames, or in direct sunlight, as this will compromise cooling performance.
- The ventilation openings must always remain unobstructed and must not be covered or blocked.
- Before commissioning the appliance, observe the recommended ambient temperature range (climate class) to ensure optimal cooling performance
- Before connecting the appliance to the power supply and before initial use, clean it thoroughly as described under "Cleaning."
- Before plugging in the appliance, ensure that a properly grounded Schuko socket and a 230-volt power supply are available, and that these match the specifications on the rating plate. Using a different power supply than specified may lead to overheating or damage to the appliance.
- Do not drill or puncture the interior or exterior of the appliance. Doing so may damage the refrigeration circuit.
- For hygiene reasons, daily cleaning is recommended during regular use.
- Always disconnect the appliance from the power supply before cleaning. If the appliance has an on/off switch or a control (thermostat) with an "off" position, turn it off beforehand. Do the same if the appliance will not be used for an extended period.
- The manufacturer/supplier cannot be held responsible for any damage resulting from failure to observe the operating instructions. In such cases, the safety of the appliance is no longer guaranteed.
- In case of malfunction or failure, disconnect the appliance from the power supply and contact your dealer. Repairs must be carried out using original spare parts only.

SAFETY INSTRUCTIONS

- Incorrect operation and improper handling can lead to malfunctions and user injury.
- This appliance is neither suitable nor intended for storing medications or easily flammable, combustible, or explosive substances.
- Observe the accident prevention regulations and general safety guidelines applicable to your area of use.
- Ensure stable placement on a dry, slip-resistant surface that can support the appliance's weight, and install it in a well-ventilated location.
- Do not expose the appliance to direct sunlight, do not place it near other heat sources (radiator, stove, oven, open flames), and do not set it on hot surfaces, as this will impair the cooling performance.
- Do not store flammable or explosive materials near the appliance.
- Do not use flammable substances near the appliance (e.g., paint or lacquer sprays). This could result in fire or explosion.
- The appliance requires sufficient space for air circulation and proper cooling performance: at least 10 cm clearance to the sides and the rear wall.
- Do not place heavy objects, loads, or liquids on top of the appliance.
- Ensure that the air intake and exhaust openings are always free of obstructions. Check them regularly and remove any dust buildup using a vacuum cleaner.
- Do not block or cover the ventilation openings.
- Do not tilt the appliance more than 45 degrees.
- Before connecting the appliance to your power supply, check whether the type of current and voltage match the specifications on the rating plate. Operation is only permitted if they match, to avoid accidents or damage.
- Do not use adapters, power strips, or extension cords. If multiple devices are connected, cables can quickly overheat, increasing the risk of fire.



- Do not move the appliance while it is in operation.
- Before moving the appliance, switch it off (if a switch is available) and unplug it from the socket.
- Always unplug the cable by pulling on the plug housing, not the cable itself.
- Ensure the appliance does not tip over while being moved, as this may cause injury.
- After relocating the appliance, wait 2 hours before turning it on again.
- If the appliance has been transported over a longer distance, allow it to stand for approx. 24 hours before starting it up to prevent potential damage or accidents.
- After a power outage or if the plug was briefly removed, switch the appliance off, wait 5 minutes, plug it back in, and then restart it.
- Do not let the power cord hang over sharp edges, crush it, or expose it to heat sources or open flames.
- Ensure the power cable cannot be unintentionally pulled or tripped over.
- Check the power cord regularly. If it is damaged (e.g., crushed), it must be replaced by a qualified technician.
- Do not touch the appliance, power cord, or plug with wet or damp hands.
- Caution! The appliance remains live as long as it is connected to the power supply.
- Protect the appliance from moisture.
- Do not clean the appliance with a direct water jet.



- The appliance must not be immersed in water or other liquids, nor should it be splashed with fluids. If the appliance does get wet, unplug it immediately and have it inspected by a qualified technician before using it again. There is a risk of fatal electric shock.
- Do not use the appliance if it is damaged.

In such cases, disconnect it from the power supply and contact your specialist dealer.



- Never attempt to open or repair the appliance yourself. There is a risk of fatal injury!
- Do not touch the compressor — there is a risk of burns..
- Do not drill or puncture the appliance, neither from the outside nor inside.

Do not install any additional devices on the refrigerator or attach foreign objects to it.



- Do not interfere with the refrigeration circuit! This must only be handled by qualified professionals. Refrigerants R600a and R290 are environmentally friendly, but they are colorless, nearly odorless, flammable gases; heavier than air; and in high concentrations can cause narcosis and suffocation.
- Repairs must be carried out by qualified personnel using original spare parts.
- Always disconnect the appliance from the power supply before cleaning or if it will not be used for an extended period.
- Keep the door open only briefly to maintain the cold temperature inside.

SAFETY INSTRUCTIONS

Place the appliance in a dry, well-ventilated room. Ensure it stands securely on a dry, non-slip surface.

Position the appliance at least 10 cm away from the wall at the back to allow for sufficient air circulation at all times. Leave at least 30 cm of space above the appliance and 10 cm on each side.

Performance and energy consumption may be affected by ambient temperature or direct sunlight. Therefore, do not expose the appliance to direct sunlight and do not place it near stoves, radiators, or other heat sources.

Ensure that the power plug is always easily accessible and can be disconnected from the power supply without difficulty.

Adjust the shelves inside the appliance so that the spacing matches the height of your stored goods.



After delivery or transport of the appliance, do not connect it to the power supply until it has been left to stand for at least 24 hours. This is absolutely necessary to allow the refrigerant to settle in the compressor.

ELECTRICAL CONNECTION

After extended transport or if the appliance has been heavily tilted, it should only be put into operation after 24 hours. This allows the refrigeration circuit to stabilize and the refrigerant to redistribute evenly, preventing malfunctions or damage. After brief movement or tilting under 45 degrees, wait at least 2 hours before connecting the appliance.

Before connecting the appliance, ensure that the voltage and frequency of the power supply match the specifications on the rating plate. Using incorrect voltage may lead to overheating and damage!

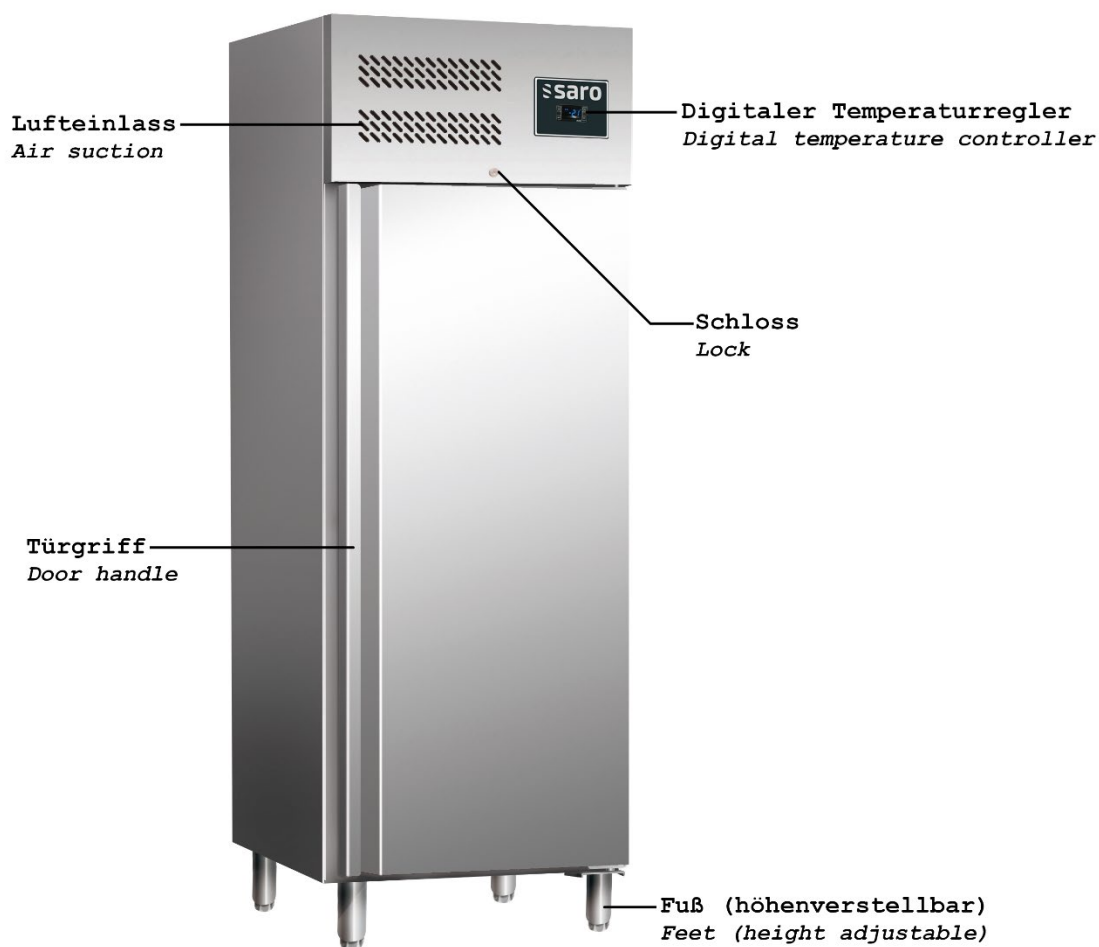
Only connect the appliance to a grounded Schuko socket with a 230-volt power supply.

Once the appliance is connected, wait approximately one hour to allow the interior to cool down sufficiently before loading it with goods.

After a power outage or if the appliance has been disconnected from the mains, wait at least 5 minutes before reconnecting and restarting it.

Restarting the appliance immediately after it has been switched off may trigger the circuit breaker and interrupt the power supply. It may also result in overloading and damaging the compressor.

STRUCTURE AND COMPONENTS



INITIAL START-UP

Before first use:

Unpack the appliance, check for completeness, and set it up (see "Appliance Installation"). Clean the appliance (see "Cleaning").

Connect the cleaned refrigeration unit to a 230 V socket (see "Electrical Connection").

Only load the appliance with goods once the desired temperature has been reached — you can check this by placing your hand near the air intake to ensure it is sufficiently cold.

OPERATION – SETTINGS



1. Power on

- Plug in the power cord
- Set the power switch to [I].
- The device will display the current temperature.

2. Unlocking/Locking the Controle Panel

- Press ▲ and ▼ simultaneously for 3 seconds.
- Displays shows:
 - **PON** (unlocked)
 - **POF** (locked)

3. Setting the Operating Temperature

1. Press the **SET** button → the display will blink.
2. Use ▲ or ▼ to select the desired temperature.
3. Press the **SET** button again to save.

4. Manuel Defrost

- Press and hold aux button for 2 seconds.
- The defrost indicator will light up → defrost process is active.

CLEANING

General Cleaning

- Defrost the appliance at least every 3 months, or more frequently if necessary.
- Before any cleaning:
 - Switch off the appliance and unplug it from the power supply.
- Clean the interior regularly:
 - Do not use abrasive cleaners → may cause damage
- Clean the door seal with water only, then dry with a cloth.
- Cleaning water must not enter the drip tray.
- Clean the rear of the appliance with caution → risk of injury from sharp edges.
- Repairs must only be carried out by qualified personnel.

Care Instructions for Stainless Steel Surfaces

Do not use:

- Scouring pads or steel wool
- Cleaners containing chlorine or acids
- Leave food residues or chemicals on surfaces for extended periods
- Let wet surfaces air-dry → always wipe dry immediately

Recommended:

- Clean with soft, non-metallic cloths
- Use cleaning agents specifically designed for stainless steel
- Rinse off cleaning agents completely and wipe dry afterward

Cleaning of the condenser (liquefier)

- Clean monthly.
- Switch off the device / unplug from the mains before cleaning.
- Insufficient cleaning → performance may decrease, warranty may be void.

MAINTENANCE

The cooling unit is very low-maintenance. Approximately every two months, check the ventilation slots for dust and dirt. Use a soft brush to gently clean them while simultaneously vacuuming the debris.

TAKING COOLING CABINET OUT OF OPERATION / STORAGE / TRANSPORT

Remove all food items, switch off the appliance, and unplug it from the mains.

Clean the appliance thoroughly inside and outside, and leave the door open to allow it to dry completely.

Once it is dry and if the appliance is not going to be used for an extended period, store it in a dry, dust-free, and cool (not hot) location. Ideally, cover the appliance or use the original packaging to protect it from damage.

Make sure the appliance is secured so that children or pets cannot climb inside and become trapped.

When storing only the packaging materials, please note that parts such as plastic bags, cardboard, and Styrofoam can pose a danger to children if they play with them unsupervised (e.g., risk of suffocation).

For transporting the appliance, it is best to use the original packaging to ensure optimal protection from shocks, sharp edges, weather conditions, etc.

Do not tilt the appliance more than 45 degrees, avoid exposure to moisture or rain, and prevent strong vibrations.

After transport, the appliance must remain stationary for approximately 24 hours before it is reconnected. This is necessary to allow the refrigerant and oil to redistribute properly. Otherwise, the appliance may become damaged.

TROUBLESHOOTING

Problem	Ursache	Lösung
The appliance does not work	The appliance is not switched on	Check whether the power plug is inserted into the socket and the appliance is switched on
	Plug or cable is damaged	Call a technician or qualified service personnel
	Fuse in the plug has blown	Replace the fuse in the plug
	No power supply	Check the power supply
	Internal connection error	Call a technician or qualified service personnel
The appliance turns on, but the temperature is too high/low	Too much ice on the evaporator	Defrost the appliance
	Condenser is dusty	Clean the condenser
	Doors are not properly closed	Check if the doors are closed and the seals are intact
	Appliance is near a heat source or airflow to the condenser is blocked	Place the refrigerator in a more suitable location
	Ambient temperature is too high	Improve ventilation or place the appliance in a cooler location
	Unsuitable food is stored inside	Remove hot food or items that block airflow
	The appliance is overloaded	Store less food in the appliance
Water is leaking from the appliance	The appliance is not level	Adjust the leveling feet so the appliance stands level (if applicable)
	The drain is blocked	Clean the drain
	Water cannot drain properly	Clean the bottom of the appliance from debris (if applicable)
	The water container is damaged	Call a technician or qualified service personnel
	The drip tray is overflowing	Empty the drip tray (if applicable)
The appliance is unusually loud	Transport safety components not removed	Remove the transport safety components
	Check and tighten all nuts and screws	Check and tighten all nuts and screws
	The appliance is not level or stable	Check and adjust the appliance's position if needed
Contact your dealer if the problems cannot be resolved through simple troubleshooting.		

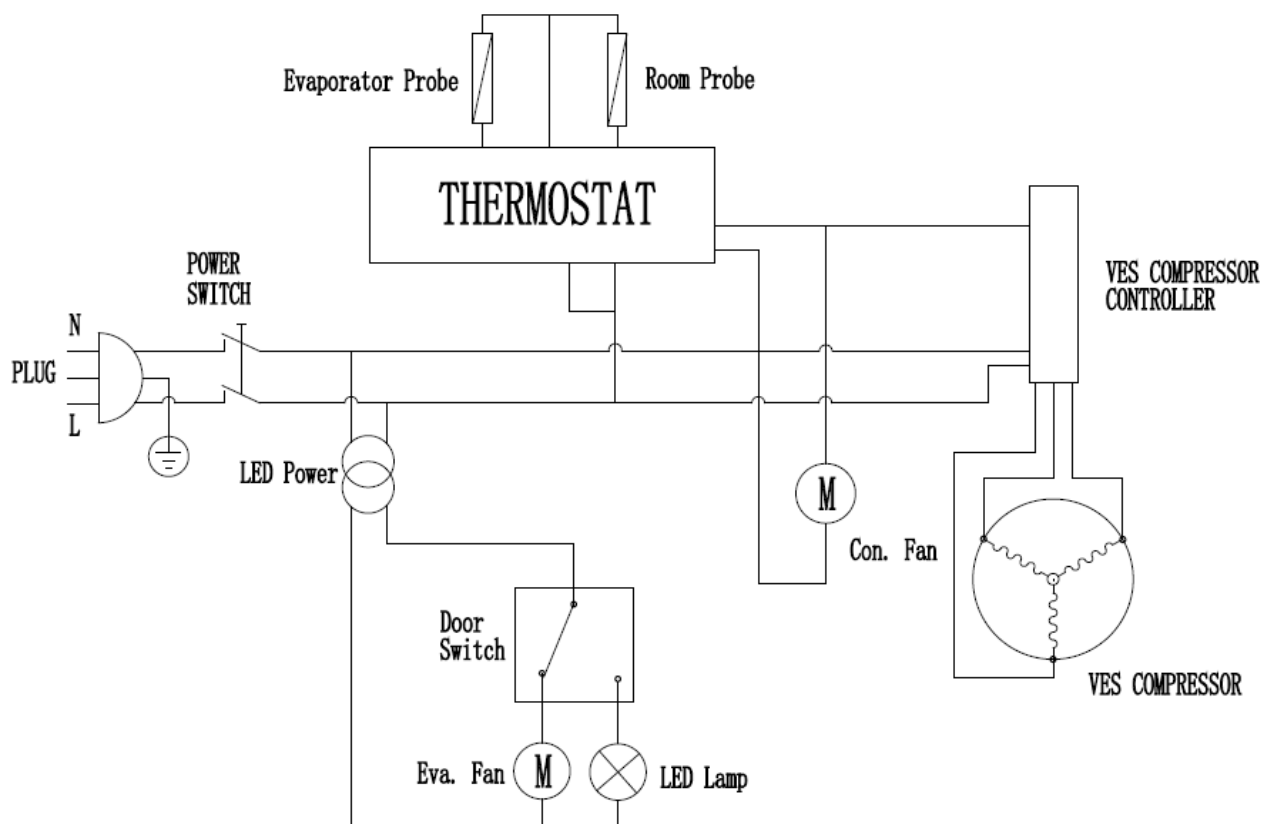
The following are not malfunctions:

You may hear a rushing sound when the cooling unit is operating. This is normal, as the refrigerant is circulating through the system.

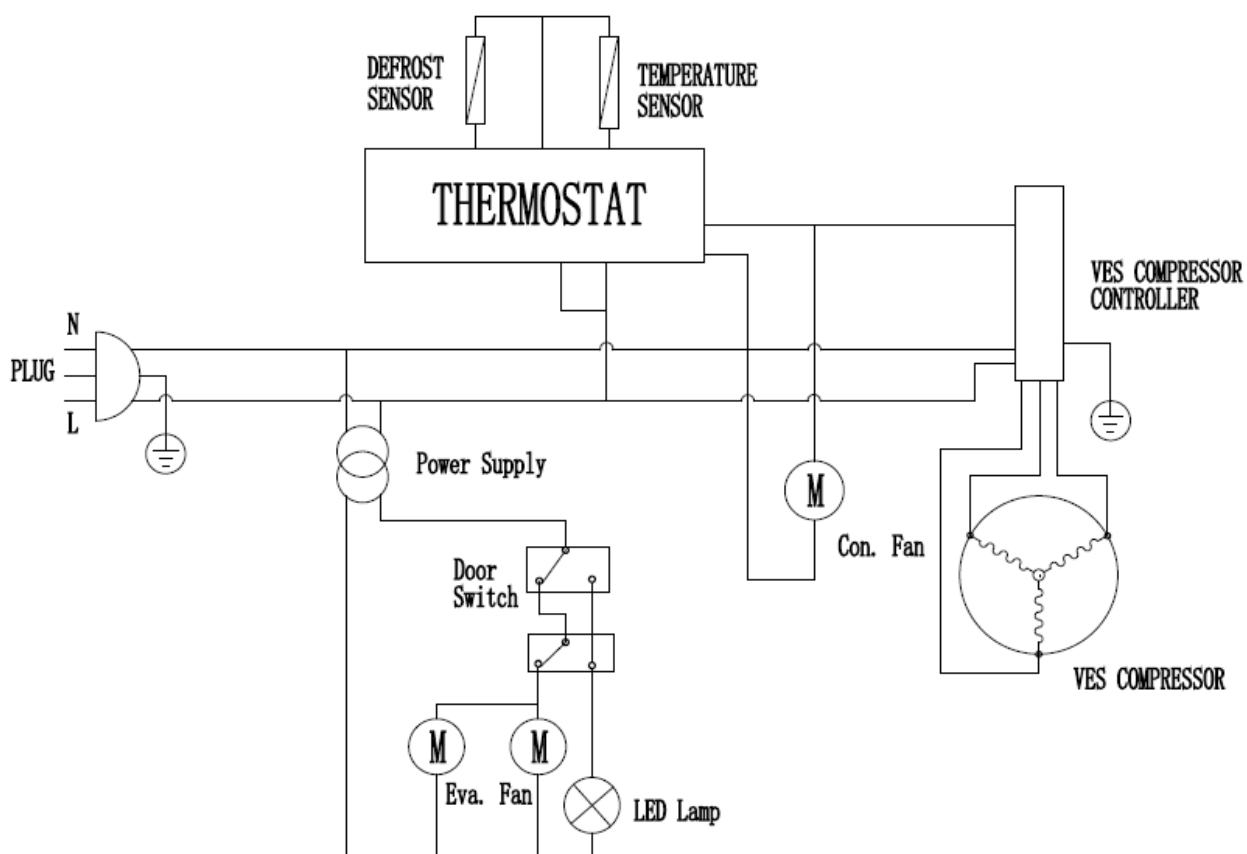
During humid seasons, condensation may form on the outside of the appliance. This is not a malfunction; the cause is high humidity. Simply wipe off the condensation with a cloth.

WIRING DIAGRAM

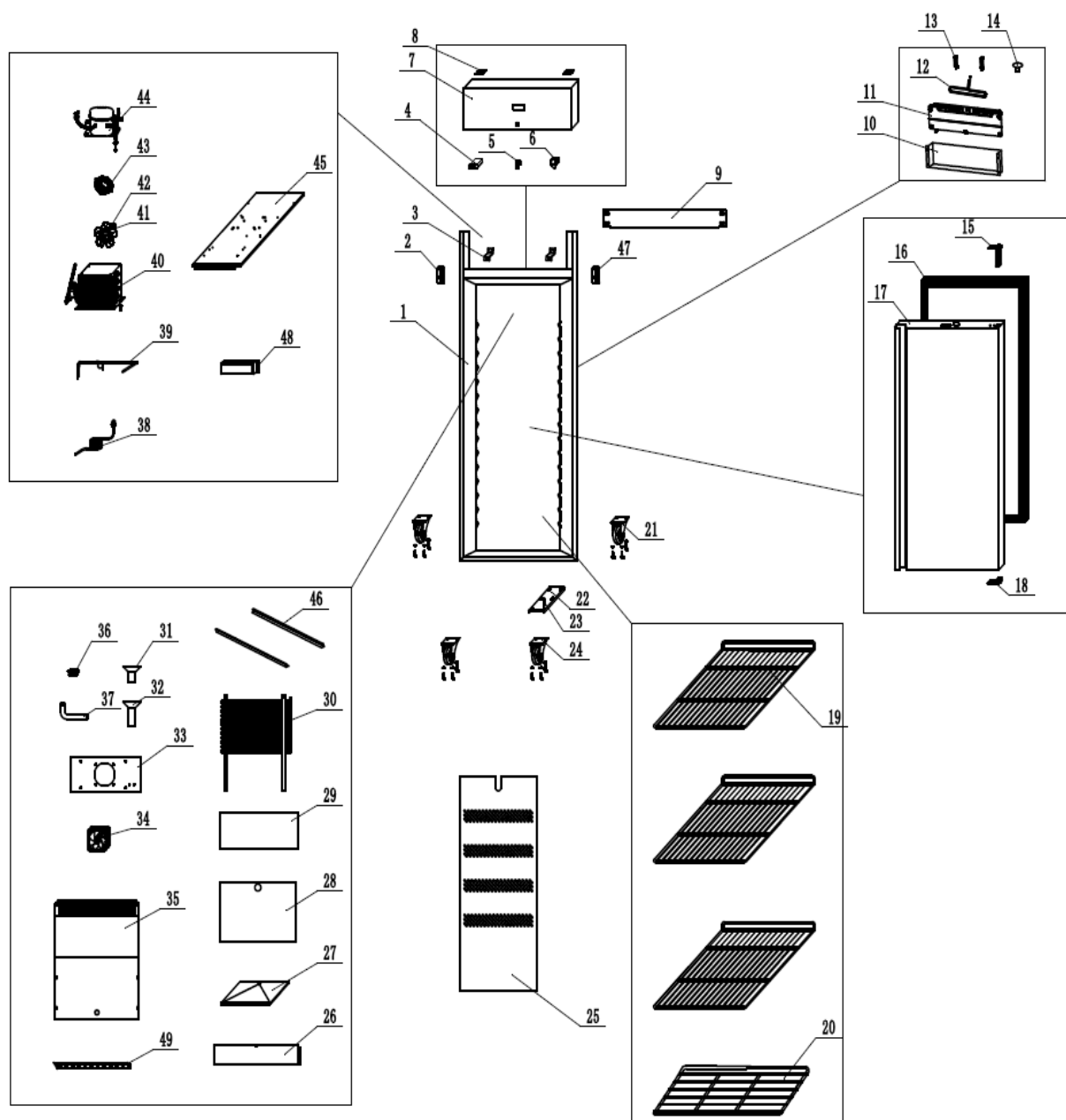
323-1420 (GN 700 PRO)



323-1425 (GN 1410 PRO)



EXPLODED VIEW DRAWING: 323-1420 (GN 700 PRO)

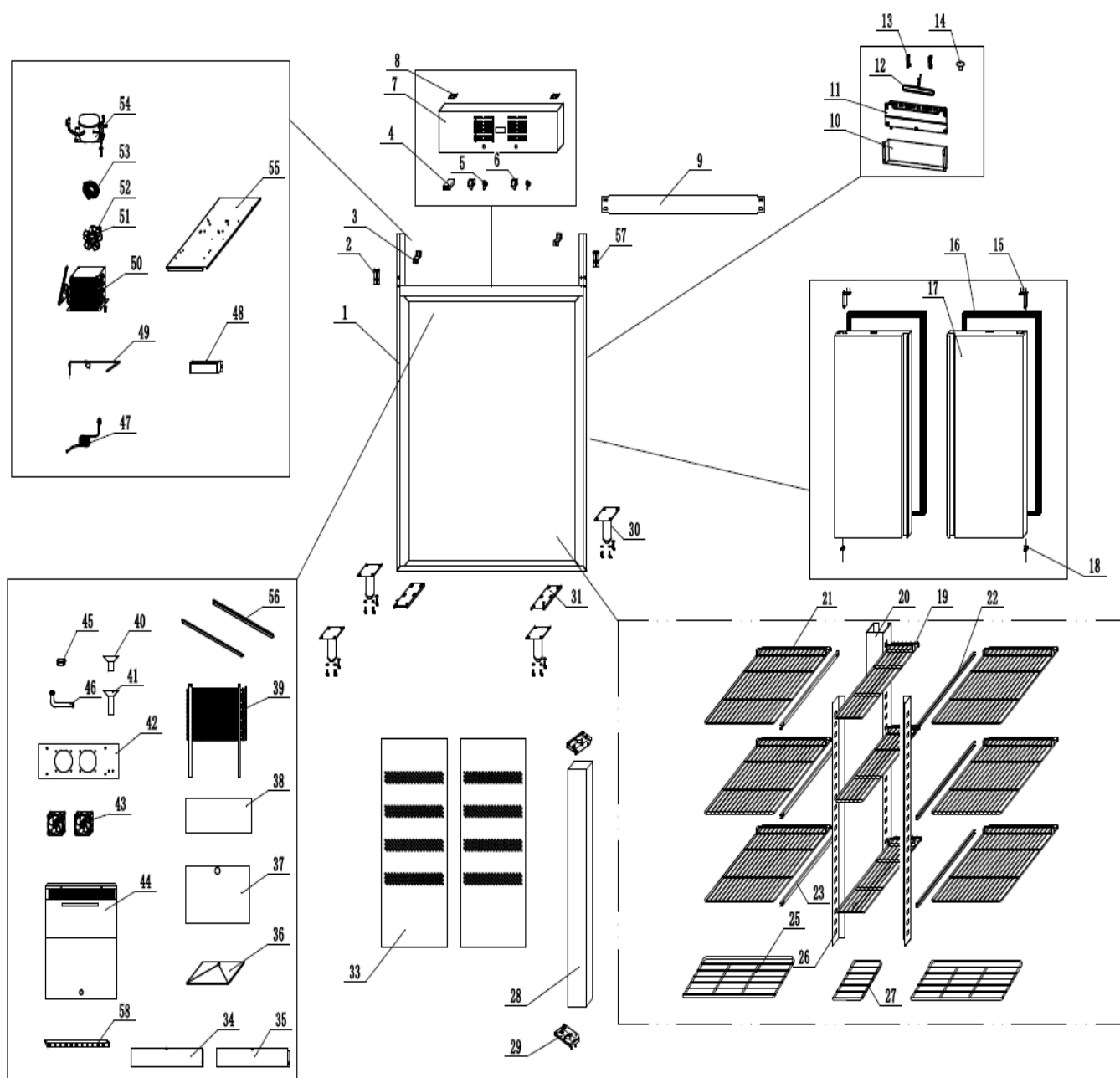


EXPLODED VIEW DRAWING – LEGEND: 323-1420 (GN 700 PRO)

1	Body	Gehäuse
2	Up Hinge/Left	Obes Scharnier / Links
3	FRONT PANEL FIXED CLIP	Halteclip für Frontabdeckung
4	Thermostat Contactor	Thermostat
5	Lock	Schloss
6	Door Switch	Türschalter
7	FRONT PANEL	Frontblende
8	HINGE	Scharnier
9	Back BRIDGE	Rückbrücke
10	Protector For Water Box	Schutzabdeckung für Wasserbehälter
11	Water Box	Kondenswasserbehälter
12	Discharge Pipe	Heißgasrohr
13	Discharge Pipe Clip	Halteclip für Heißgasrohr
14	Water Pipe Connector	Kondenswasserrohranschluss
15	Door Spring	Türfeder
16	Gasket	Dichtung
17	Door	Tür
18	Down Hinge Axis Jacket	Buchse für untere Scharnierachse
19	Shelf	Rost
20	Down Shelf	Unteres Rost
21	Normal Wheel	Ungebremstes Rad
22	Door Hinge /Down	Türscharnier / Unten
23	Down Hinge Axis	Untere Scharnierbolzen
24	Brake Wheel	Gebremstes Rad
25	Air Deflector	Luftleitblech
26	Inside Panel	Innenverkleidung
27	Evaporator Water Pan	Verdampfer-Wasserwanne
28	Keep Warm Board	Isolierung
29	EvaporatorWind Guide Foam	Isolierung für Verdampfer
30	Evaporator	Verdampfer
31	DRAIN PIPE (B)	Ablaufschlauch (B)
32	DRAIN PIPE (A)	Ablaufschlauch (A)
33	Circle Fan Support	Halterung für Umluftventilator
34	Circle Fan	Umluftventilator
35	Circle Fan Cover	Abdeckung Umluftventilator
36	Sensor Fixed BOX	Sensorgehäuse
37	WATER PIPE	Kondenswasserleitung
38	Plug	Netzstecker
39	Suction Pipe	Saugleitung
40	Condenser	Kondensator
41	Fan Blade	Lüfterflügel
42	Condenser Fan	Kondensatorlüfter
43	Wall Ring	Lüfterhalter
44	Compressor	Kompressor
45	Unit Board	Montageplatte
46	EVAPORATOR FIXED BOARD SUPPORT	Halterung für Verdampferplatte

47	Up Hinge/Right	Oberes Scharnier / Rechts
48	Led Power Supply	LED-Treiber
49	Lamp	LED-Lampe

EXPLODED VIEW DRAWING: 323-1425 (GN 1410 PRO)



EXPLODED VIEW DRAWING – LEGEND: 323-1425 (GN 1410 PRO)

1	Body	Gehäuse
2	Up Hinge/Left	Oberes Scharnier / Links
3	FRONT PANEL FIXED CLIP	Befestigungsclip für Frontabdeckung
4	Thermostat Contactor	Thermostat
5	Lock	Schloss
6	Door Switch	Türschalter
7	FRONT PANEL	Frontblende
8	HINGE	Scharnier
9	Back BRIDGE	Rückbrücke
10	Protector For Water Box	Schutzabdeckung für Wasserbehälter
11	Water Box	Kondenswasserbehälter
12	Discharge Pipe	Heißgasrohr
13	Discharge Pipe Clip	Rohrhalter für Heißgasrohr
14	Water Pipe Connector	Anschlussstück für Kondenswasserleitung
15	Door Spring	Türfeder
16	Gasket	Dichtung
17	Door	Tür
18	Down Hinge Axis Jacket	Buchse für untere Scharnierachse
19	Small Central Shelf	Brückenrost
20	BACK MIDDLE SUPPORT	Hintere Mittelstütze
21	Shelf	Rost
22	GUIDE LEFT	Laufleiste links
23	GUIDE RIGHT	Laufleiste rechts
25	Down Shelf	Bodenrost
26	MIDDLE SUPPORT	Mittelstütze
27	Floor Protector Small Shelf	Bodenrost klein
28	MIDDLE BRIDGE	Mittlere Frontsäule
29	MIDDLE GIRDER FIXER	Halter für Frontsäule
30	FEET	Füße
31	Door Hinge /Down	Türscharnier / unten
33	Air Deflector	Luftleitblech
34	Inside Panel LEFT	Innenverkleidung links
35	Inside Panel RIGHT	Innenverkleidung rechts
36	Evaporator Water Pan	Wasserauffangschale unter Verdampfer
37	Keep Warm Board	Isolierung
38	EvaporatorWind Guide Foam	Isolierung Verdampfer
39	Evaporator	Verdampfer
40	DRAIN PIPE (B)	Ablaufschlauch (B)
41	DRAIN PIPE (A)	Ablaufschlauch (A)
42	Circle Fan Support	Halterung Umluftventilator
43	Circle Fan	Umluftventilator
44	Circle Fan Cover	Abdeckung Umluftventilator
45	Sensor Fixed BOX	Befestigungsbox für Sensor
46	WATER PIPE	Kondenswasserleitung
47	Plug	Netzstecker
48	Led Power Supply	LED-Treiber

49	Suction Pipe	Saugleitung
50	Condenser	Kondensator
51	Fan Blade	Lüfterflügel
52	Condenser Fan	Kondensatorlüfter
53	Wall Ring	Lüfterhalter
54	Compressor	Kompressor
55	Unit Board	Montageplatte
56	EVAPORATOR FIXED BOARD SUPPORT	Halterung für Verdampferplatte
57	Up Hinge/Right	Oberes Scharnier / Rechts
58	Lamp	LED-Lampe

PACKAGING DISPOSAL



Please separate the packaging materials accordingly and take them to the appropriate collection points for recycling and environmental protection.

DEVICE DISPOSAL



Once the appliance has reached the end of its life, please dispose of it properly at a designated collection point for electrical devices.
Electrical appliances do not belong in household waste.
Your local authority can provide information on the locations and opening hours of disposal sites.
This is the only way to ensure that old appliances are disposed of and recycled correctly.
Thank you!

Made in P.R.C for:

SARO Gastro-Products GmbH
Sandbahn 6, 46446 Emmerich am Rhein, Germany
Tel. +49 (0) 2822 9258-0
Fax +49 (0) 2822 18192
E-Mail info@saro.de
Web www.saro.de