

Operating Instructions
Electric glass polishing machine
Model GPM-5
Order No.: 175-1600



Contents	Page
1. Contents	1
2. General Information	2
3. Safety Information	2 - 3
4. Initial Use and Operation Instructions	3 - 4
5. Cleaning	5
6. Components	5
7. Exploded diagram	6
8. Disposal	7

2. General Information

- Read through these operating instructions carefully. They contain important information for the safe and proper operation of the appliance.
- We recommend keeping the operating instructions in a place where you can always quickly find them.
- If you pass on the appliance to a third party, please pass on these operating instructions as well.
- As soon as you have unpacked the appliance, check that everything is in good order and condition. If anything is damaged, please contact your dealer.
- Please keep the cardboard packaging, you might need it if you move, or if the device has to be returned for repairs.
- The appliance was developed for polishing glasses. The appliance is not intended for any other purpose. Improper use may cause damage and will result in loss of warranty.
- In the event of a fault and/or malfunction, switch the appliance off. Disconnect the plug from the socket and contact your dealer. He will carry out the repair using original manufacturer's parts.
- Observe the current accident prevention regulations for the intended field of application and general safety regulations.
- The manufacturer/dealer cannot accept liability for damage caused by a failure to comply with these operating instructions. In addition, the safety of the appliance is no longer warranted.

3. Safety Information

- The appliance must only be used when it is in proper working order and condition.
- Keep the packaging materials out of reach of children (e.g. plastic bags, polystyrene parts). Danger of suffocation!
- Place the appliance on a stable, flat, heat-resistant surface away from gas or electric stoves or other heat sources.
- Do not use the appliance outside or in damp/wet environments.
- Never touch the appliance, power cable or plug with moist or wet hands.
- The appliance must be connected to a properly installed wall socket. Do not connect any other device to the same socket. The socket must always remain accessible so that the device can be disconnected from the power supply in an emergency.
- When pulling out the plug, always grip the plug casing – never pull on the cable. Always switch off the machine first.
- Never allow the cable to hang over the edge of a table or any other sharp edges.
- Do not use any extension leads or adapter plugs.
- The cable must not come in contact with hot parts or water.
- Check the condition of the cable regularly. If it is damaged, e.g. by crushing, then it must be replaced by a qualified professional.
- Do not leave the appliance unattended when in use. Take extra care if children are nearby, as they are not aware of the dangers of operating electrical equipment.
- Do not move the appliance when it is in use.

- Only use the appliance if all brushes are properly engaged on the base unit
- Switch the appliance off and pull out the plug before cleaning or carrying out repairs.
- Never immerse the appliance, power cable or plug in water or other liquids. Danger to life through electric shock!
- Repairs must only be carried out by a qualified professional using the manufacturer's recommended replacement parts. These are in compliance with technical specifications. Alterations and modifications to the product are prohibited. Never attempt to repair the appliance yourself. Risk of electric shock!
- If you do not intend to use the appliance for an extended period, disconnect the plug from the socket, clean the appliance and cover it with a breathable cloth.

4. Initial Use and Operating Instructions

- The appliance may only be operated by trained personnel and in compliance with the relevant occupational safety and accident prevention regulations.
- Place the hot air tube over the fan opening (the hot air nozzle must be directed towards the brush holders) and secure it with the screw provided.
- Before using the appliance for the first time wash the brushes in warm water and a mild, pH-neutral detergent. Rinse the brushes thoroughly with clean water and leave them until completely dry.
- Mount the brushes on the base Start with the short brushes and place it on the middle brush holder. Turn the brush clockwise so that it engages in the holder (colour of brush may differ from illustration).



- Repeat this process with the other four brushes in any order.



- Connect the appliance to an earthed socket. The appliance is now ready to use.
- To turn on the appliance, press the on/off switch on the top of the unit.
- To polish a glass proceed as follows:
Take a glass (the glass must be rinsed and still damp) and place it over the middle brush. The middle brush dries and polishes the inside of the glass, while the other brushes dry and polish the outside of the glass. Then hold the bottom of the glass against one of the brushes. Repeat this process with each other glass.
- For glasses with stems proceed as follows:
First dry the base by holding it between the brushes, then polish it like a glass without a stem.

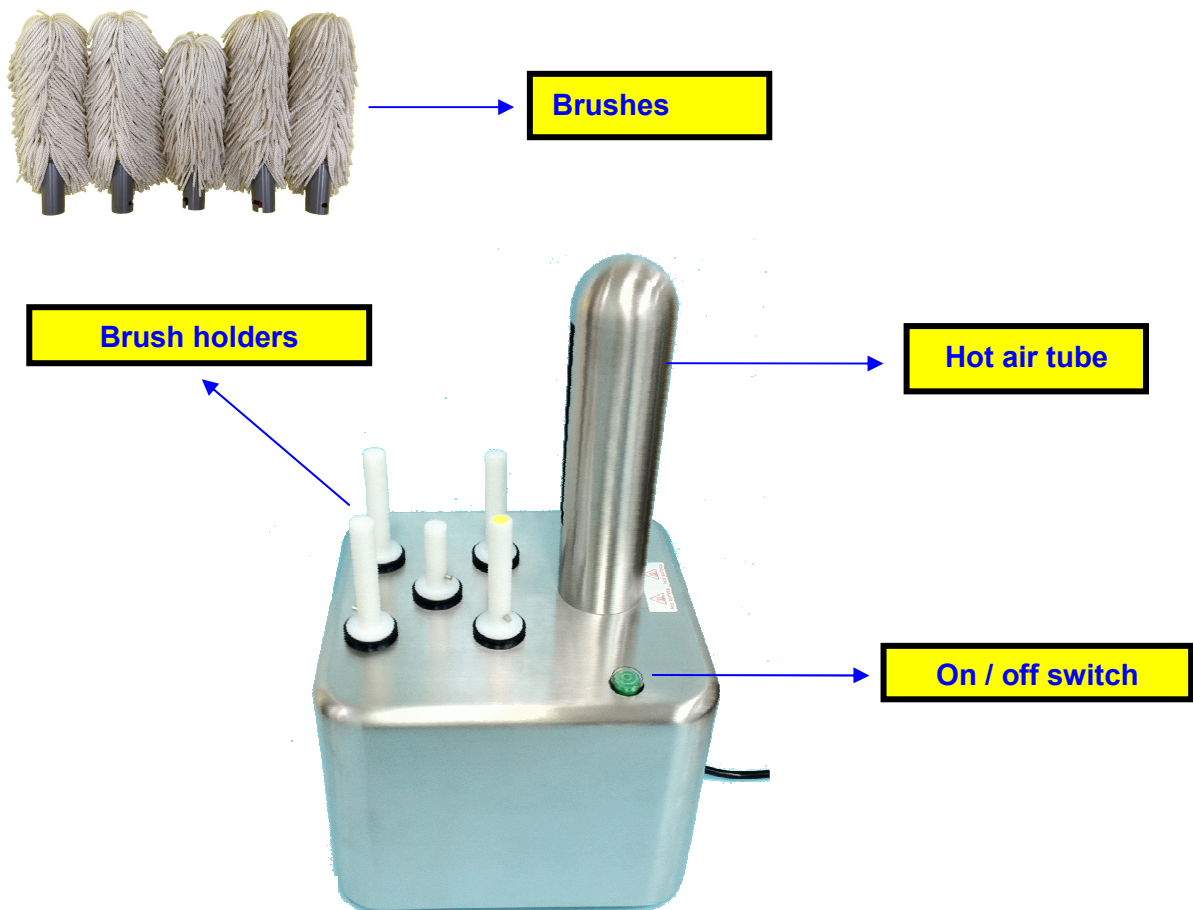


5. Cleaning

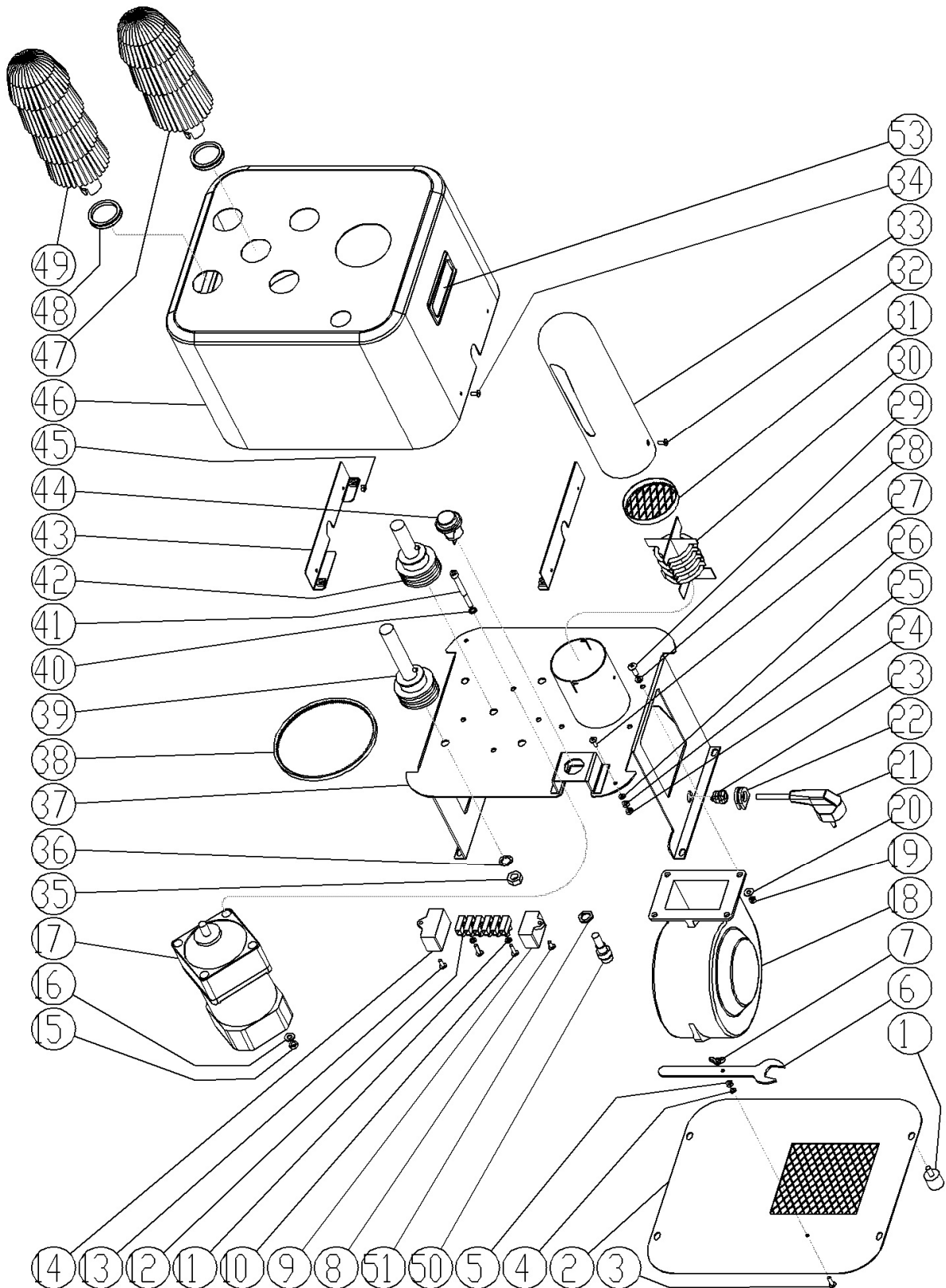
- Make sure the machine is switched off and disconnect the plug from the socket.
- Wipe the casing of the appliance with a soft cloth. If required, use a mild detergent.
- The brushes can be cleaned as described under "Initial Use and Operating Instructions".

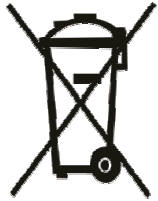
Page 4

6. Components



7. Exploded diagram



8. Disposal

Once the appliance has reached the end of its service life please dispose of it at a collection point for electrical appliances. Electrical appliances do not belong in the household waste. For addresses and opening times of collection points please ask your local authority. This is the only way to ensure that waste equipment is properly disposed of and recycled.

In the event of technical problems please consult your dealer.

Saro Gastro-Products GmbH
Sandbahn 6
46446 Emmerich am Rhein / Germany
Tel.: +49(0)2822 – 92580 / Fax: +49(0)2822 – 18192
www.saro.de / info@saro.de