

Operating Manual

Toaster Model ARIS 4

Item No.: 282-1055



Table of Contents

SCOPE OF DELIVERY	3
STANDARDS AND DIRECTIVES	3
TECHNICAL OVERVIEW	4
SYMBOL EXPLANATIONS	4
GENERAL INSTRUCTIONS	5
SAFETY INSTRUCTIONS.....	6
DEVICE INSTALLATION.....	7
ELECTRICAL CONNECTION.....	7
STRUCTURE AND COMPONENTS	8
INITIAL START-UP.....	8
OPERATION – SETTINGS	9
CLEANING.....	10
MAINTENANCE	10
TAKING TOASTER OUT OF OPERATION / STORAGE / TRANSPORT.....	10
WIRING DIAGRAM.....	11
EXPLODED VIEW DRAWING.....	12
PACKAGING DISPOSAL	13
DEVICE DISPOSAL	13

Dear Customer,

Thank you for purchasing the SARO Toaster ARIS 4, and congratulations on your choice.

This appliance is designed for use in hotels, restaurants, canteens, snack bars, and, if necessary, also in private households.

Please read this operating manual carefully before first use. It contains important information on the safe handling, cleaning, and maintenance of the appliance.

Only proper use in accordance with these instructions ensures safe operation and a long service life.

We wish you great enjoyment with your new SARO product.

SCOPE OF DELIVERY

- 1 Toaster
- 1 Operating Manual

STANDARDS AND DIRECTIVES

The appliance complies with the current standards and directives of the EU:

Low Voltage Directive – LVD 2014/35/EU,

Electromagnetic Compatibility Directive – EMC 2014/30/EU,

RoHS Directives 2011/65/EU and 2015/863/EU,

Materials in contact with food – Regulation (EC) 1935/2004, LFGB §§ 30, 31.

The corresponding declaration of conformity can be provided upon request.

TECHNICAL OVERVIEW

Toaster	
Model	ARIS 4
Item No.	282-1055
Material	(Housing) Stainless steel, (Control knobs / levers) plastic, black-silver
Number of toast slots	4
Crumb tray	2, removable
Timer for browning level adjustment	Yes
Defrost and reheat function	Yes
Connection	Ready to plug in with Schuko plug
Power supply	220-240V ~ 50-60Hz 1400-1600W
External dimensions	W 273 x D 282 x H 186 mm
Weight (net / gross)	2,5 / 3 kg
GTIN [EAN-Code]	4017337282067

SYMBOL EXPLANATIONS



WARNUNG!

Dieses Symbol kennzeichnet Gefahren, die zu Verletzungen führen können. Halten Sie die angegebenen Hinweise zur Arbeitssicherheit unbedingt genau ein und verhalten Sie sich in diesen Fällen besonders vorsichtig.

WARNING!

This symbol indicates hazards that may cause injuries. Always follow the specified safety instructions precisely and exercise extra caution in these situations.



WARNUNG: GEFAHR DURCH ELEKTRISCHEN STROM!

Dieses Symbol macht auf gefährliche Situationen durch elektrischen Strom aufmerksam. Bei Nichtbeachten der Sicherheitshinweise besteht Verletzungs- oder Lebensgefahr!

WARNING: DANGER OF ELECTRIC SHOCK!

This symbol warns of hazardous situations caused by electric current. Failure to follow the safety instructions may result in injury or death!



WARNUNG: HEISSE OBERFLÄCHE - VERBRENNUNGSGEFAHR

Dieses Symbol weist auf die heiße Oberfläche des Gerätes, während des Betriebes und danach hin. Verbrennungsgefahr bei Nichtbeachten!

WARNING: HOT SURFACE - RISK OF BURNS

This symbol indicates the hot surface of the device during and after operation. Risk of burns if not observed!

GENERAL INSTRUCTIONS

- Before using the appliance for the first time, read this operating manual carefully and follow the instructions provided.
- Keep this operating manual readily accessible near the appliance.
- The manufacturer/dealer cannot be held liable for any damage resulting from failure to follow these instructions.
- Failure to follow this manual voids the safety guarantee of the appliance.
- If the appliance is transferred to a third party, this manual must be included.
- This appliance must not be operated by children or persons with reduced physical, sensory, or mental capabilities, as they may not recognize the risks involved in using electrical and/or cooling devices, which may lead to accidents, fire, explosions, or property damage.
- After unpacking the appliance, check that everything is in perfect condition. If any damage is found, do not connect the appliance and contact your dealer.
- Verify that all components listed in the scope of delivery are present. If any are missing, contact your dealer.
- Keep the original packaging. The appliance can only be safely transported in its original packaging.
- Note that all packaging materials (plastic bags, cardboard, Styrofoam parts, etc.) can pose a danger to children and must be kept out of their reach.
- The toaster is designed for toasting, browning, defrosting, or warming slices of toast, bread, or thin rolls.
- The toaster is intended for household or similar use, e.g., in staff kitchen areas in shops, offices, or other working environments; on farms; by clients in hotels, motels, and other residential-type environments.
- Improper use may cause damage and void the warranty.
- Do not use the appliance outdoors in the rain or in damp environments!
- Before connecting the appliance, make sure a grounded Schuko socket and a 230-volt power supply are available, and that they match the specifications on the rating plate. Using other power sources may lead to overheating.
- Observe applicable accident prevention regulations and general safety guidelines for the intended area of use.
- Clean the appliance thoroughly before first use.
- Before cleaning the appliance, ensure no function is active. Then unplug it and allow it to cool down!
- In the event of a fault and/or malfunction, interrupt operation using the appropriate button (see Operation), unplug the appliance, and contact your dealer. Repairs must be carried out using original spare parts.

SAFETY INSTRUCTIONS

- Improper use and mishandling can lead to malfunction and user injury.
- Place the appliance on a level, dry, heat-resistant, and stable surface.
- Do not place the appliance near flammable liquids, gases, or objects.
- The appliance becomes hot during operation.
- Only touch the plastic knobs/levers during use; do not touch the appliance housing, as it may become hot.
- Do not move the appliance while it is in use.
- Ventilation slots are located underneath the appliance. Do not cover or block them, as this can cause overheating and pose a fire hazard!
- Before connecting to the power supply, check that the type and voltage match the specifications on the rating plate.
- Do not use adapters or extension cords.
- Operating multiple appliances from one socket or power strip can cause the cables to overheat, posing a fire hazard!
- Do not let the power cord hang over sharp edges and keep it away from hot surfaces and open flames.
- Always unplug by holding the plug housing—not by pulling the cord.
- Ensure the cord cannot be accidentally pulled or become a tripping hazard.
- Regularly check the power cord. If damaged (e.g., crushed), it must be replaced by a qualified professional.
- Do not touch the appliance, plug, or cord with wet or damp hands.
- Caution! The appliance remains live as long as it is plugged in.
- Do not insert food wrapped in foil or any metallic objects into the toaster! This may cause fire and/or electric shock!
- Do not insert foods with liquids or that melt (e.g., toast with butter or cheese), or food wrapped in foil! This will damage and contaminate the toaster, and may lead to property damage, fire, and electric shock!
- Do not attempt to remove jammed bread or crumbs with metal objects! Risk of burns and electric shock! Always end the function, unplug the appliance, let it cool, and use a wooden utensil if necessary. Be careful not to damage or bend the heating wire!
- This device is not designed for use with a bun warmer. Do not use third-party accessories either—risk of injury and fire!
- Do not immerse the appliance in water or other liquids or allow it to come into contact with fluids. If it becomes wet, unplug immediately and have it checked by a specialist before reuse. Danger to life due to electric shock!
- Never touch the appliance or plug with wet or damp hands. Risk of electric shock!
- Do not use a damaged appliance!
- In such cases, unplug the device and contact your dealer.
- Never attempt to open or repair the appliance yourself. Life-threatening risk!
- Always unplug the appliance after use and once it has cooled down, and also before cleaning or during extended periods of non-use.
- The crumb trays must be checked and emptied regularly.
- WARNING: Setting the browning level too high may cause the bread to burn! Do not leave the appliance unattended!



DEVICE INSTALLATION

Place the appliance in a dry and well-ventilated room. Ensure it stands securely on a dry and non-slip surface.

Make sure that the power plug is always easily accessible and can be disconnected from the power supply without difficulty.

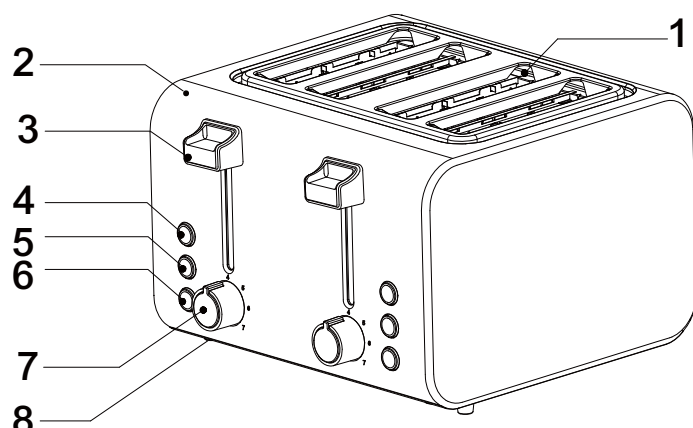
ELECTRICAL CONNECTION

Before connecting the appliance, make sure that the voltage and frequency of the power supply match the information on the rating plate! Using the wrong voltage can cause the appliance to overheat!!!

Only connect the appliance to a grounded socket with a 230-volt connection.

After a power failure or if the appliance has been disconnected from the power supply, wait at least 5 minutes before reconnecting and starting the appliance!

STRUCTURE AND COMPONENTS



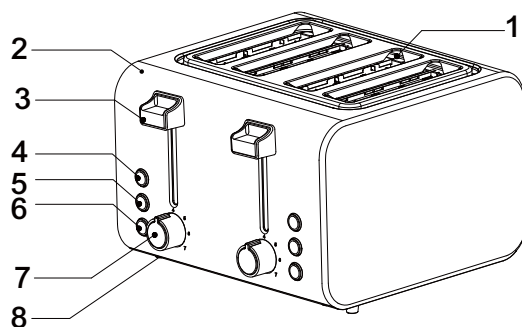
- | | |
|----------|--|
| 1 | Brotschlitze
<i>Bread slots</i> |
| 2 | Gehäuse
<i>Housing</i> |
| 3 | Toasthebel
<i>Toast lever</i> |
| 4 | Auftauen mit Kontrollampe
<i>Defrosting with control lamp</i> |
| 5 | Erwärmen mit Kontrollampe
<i>Heating with control lamp</i> |
| 6 | Stopptaste für alle 3
Funktionen. Mit Kontrollampe für
Toastfunktion
Stop button for all 3 functions.
With control lamp for toasting
function |
| 7 | Drehregler für
Bräunungsgrad
<i>Rotary browning control</i> |
| 8 | Gummifuß
<i>Rubber foot</i> |

INITIAL START-UP

Before first use:

- After removing the packaging material, check the delivery for completeness and ensure the appliance is free of defects.
- Place the appliance on a level, stable, non-slip, and dry surface with sufficient space for air circulation (see also Safety Instructions).
- Before the first use, heat the appliance 4 to 5 times at the highest setting without bread to burn off any production residues (fats/oils). Ensure adequate ventilation (e.g., open window) during this process. To do this, plug in the toaster, set both browning controls (7) to the highest level (level 7), and push both levers (3) down.
- Both function indicator lights will illuminate and the toasting process will begin.
- After the browning time has elapsed, the levers will automatically return to the up position, the indicator lights will go out, and the heating process will end.
- Repeat this process 3 to 4 more times.
- Then set both browning controls (7) back to level 4 or 5.
- Allow the toaster to cool down and unplug it.
- Now wipe the housing with a warm, damp cloth and then dry with a soft cloth.
- Never use aggressive or abrasive cleaning agents as they may scratch the appliance.
- Ensure the power cord and plug do not get wet during cleaning, and that no liquid drips into or enters the toaster!
- Do not immerse the toaster in water or similar liquids! Risk of electric shock!
- Finally, check whether the two crumb trays are correctly inserted into the appliance.
- Your toaster is now ready for use.

OPERATION – SETTINGS



- The toaster can hold up to 4 slices of bread.
- The appliance is a combination of two independent units, allowing two slices to be toasted in one section and the other two (if desired) with different settings.
- However, each bread slot (1) is designed for only one slice of bread!

1. Check that the crumb trays are properly inserted.
2. Once they are correctly in place, plug in the toaster.
3. Place slices of bread into the bread slots (1).
4. Select the desired browning level on the rotary dial (7), from level 1 to 7.
5. Press the toast lever (3) down until it clicks into place. The stop button (6) will now be illuminated, indicating that the toasting (heating) process has started.
6. If previously toasted bread is to be reheated, also press the "Reheat" button (5). This will illuminate and adjust the heat cycle accordingly.
7. To toast frozen bread, press the "Defrost" button (4). This will also illuminate, and the heat cycle will be adjusted.
8. To toast a fresh slice of bread, do not press any additional function button.
9. If needed, the browning level can be adjusted during the process using the rotary dial (7), either higher or lower.
10. If needed, or in case of incorrect function selection, the current process can be stopped immediately by pressing the stop button (6). The toast lever (3) will pop up, raising the bread and deactivating the heating element. (Switching directly from button (4) to (5) or vice versa is not possible—use the stop button (6) first and then press the correct function.)
11. After the set browning time has elapsed, the toast lever (3) will automatically pop up, raising the bread—this applies to all selected functions.
12. The finished toast can now be removed.



WARNING: The bread slices and stainless steel parts of the appliance become very hot during and immediately after the toasting process!

CLEANING

Allow the toaster to cool down and unplug it.

Remove the crumb tray from the bottom of the appliance (at the rear), empty the crumbs, and if necessary, wipe the trays with mild dish soap. Dry thoroughly and reinsert them.

Wipe the housing with a warm, damp cloth and then dry with a soft cloth.

Never use aggressive or abrasive cleaning agents as they may scratch the appliance.

Ensure that the power cord and plug do not get wet during cleaning, and that no liquid drips into or runs into the toaster!

Do not immerse the toaster in water or any similar liquid for cleaning! Risk of electric shock!

Finally, check that the two crumb trays are properly reinserted into the appliance.

Your appliance is now ready for use again.

Depending on usage frequency, the trays should be emptied about once a week.

MAINTENANCE

The appliance requires very little maintenance. Please follow the guidelines under Installation and Cleaning.

Regularly check the ventilation slots.

TAKING TOASTER OUT OF OPERATION / STORAGE / TRANSPORT

Switch off the appliance and unplug it from the power supply.

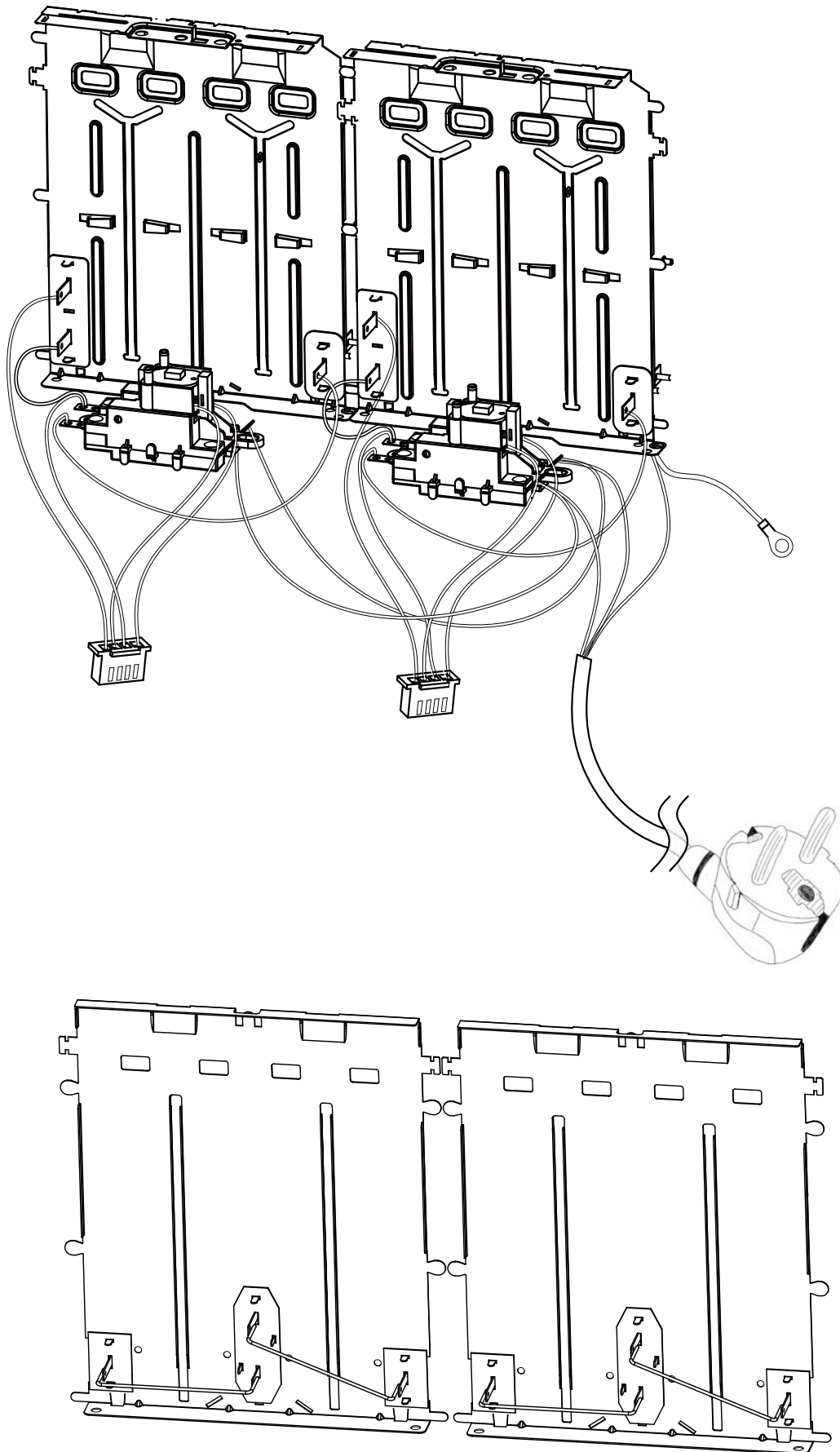
Clean the appliance thoroughly inside and out. If it is dry and will not be used for an extended period, store it in a dry, dust-free, and cool place. Ideally, cover the appliance or use the original packaging to protect it from damage.

Ensure the appliance is secured to prevent pets from climbing inside and potentially getting trapped.

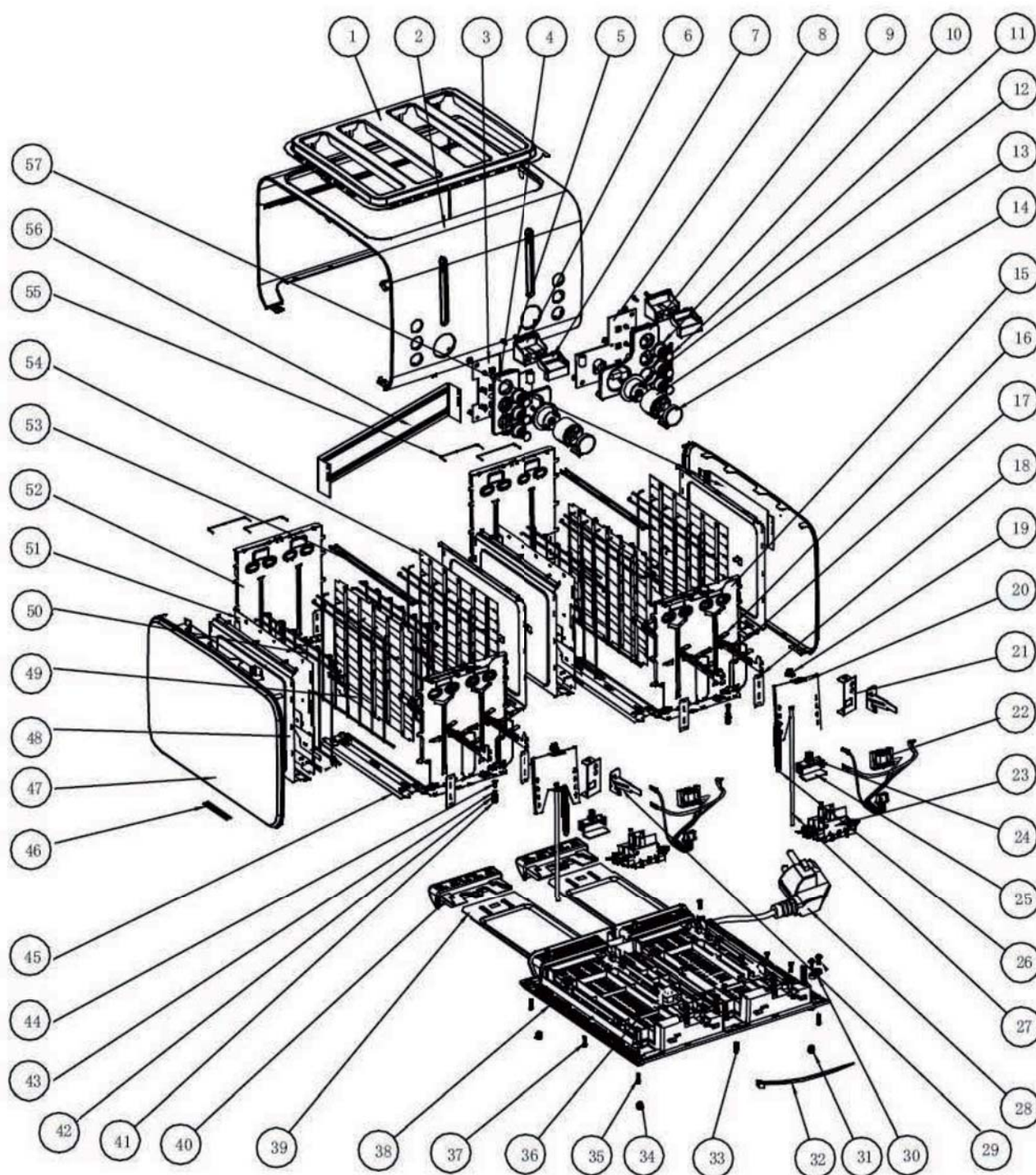
When storing only the packaging materials, be aware that components such as plastic bags, cardboard, and Styrofoam parts can pose a danger to children if played with unsupervised (e.g., risk of suffocation).

For transporting the appliance, it is best to use the original packaging to ensure optimal protection against impact, sharp edges, weather conditions, etc. Do not expose it to moisture or rain and avoid strong vibrations or shocks.

WIRING DIAGRAM



EXPLODED VIEW DRAWING

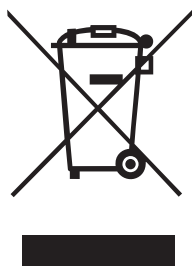


PACKAGING DISPOSAL



Please separate the packaging materials accordingly and take them to the appropriate collection points for recycling and environmental protection.

DEVICE DISPOSAL



Once the appliance has reached the end of its life, please dispose of it properly at a designated collection point for electrical devices.
Electrical appliances do not belong in household waste.
Your local authority can provide information on the locations and opening hours of disposal sites.
This is the only way to ensure that old appliances are disposed of and recycled correctly.
Thank you!

Made in P.R.C for:

SARO Gastro-Products GmbH
Sandbahn 6, 46446 Emmerich am Rhein, Germany
Tel. +49 (0) 2822 9258-0
Fax +49 (0) 2822 18192
E-Mail info@saro.de
Web www.saro.de

