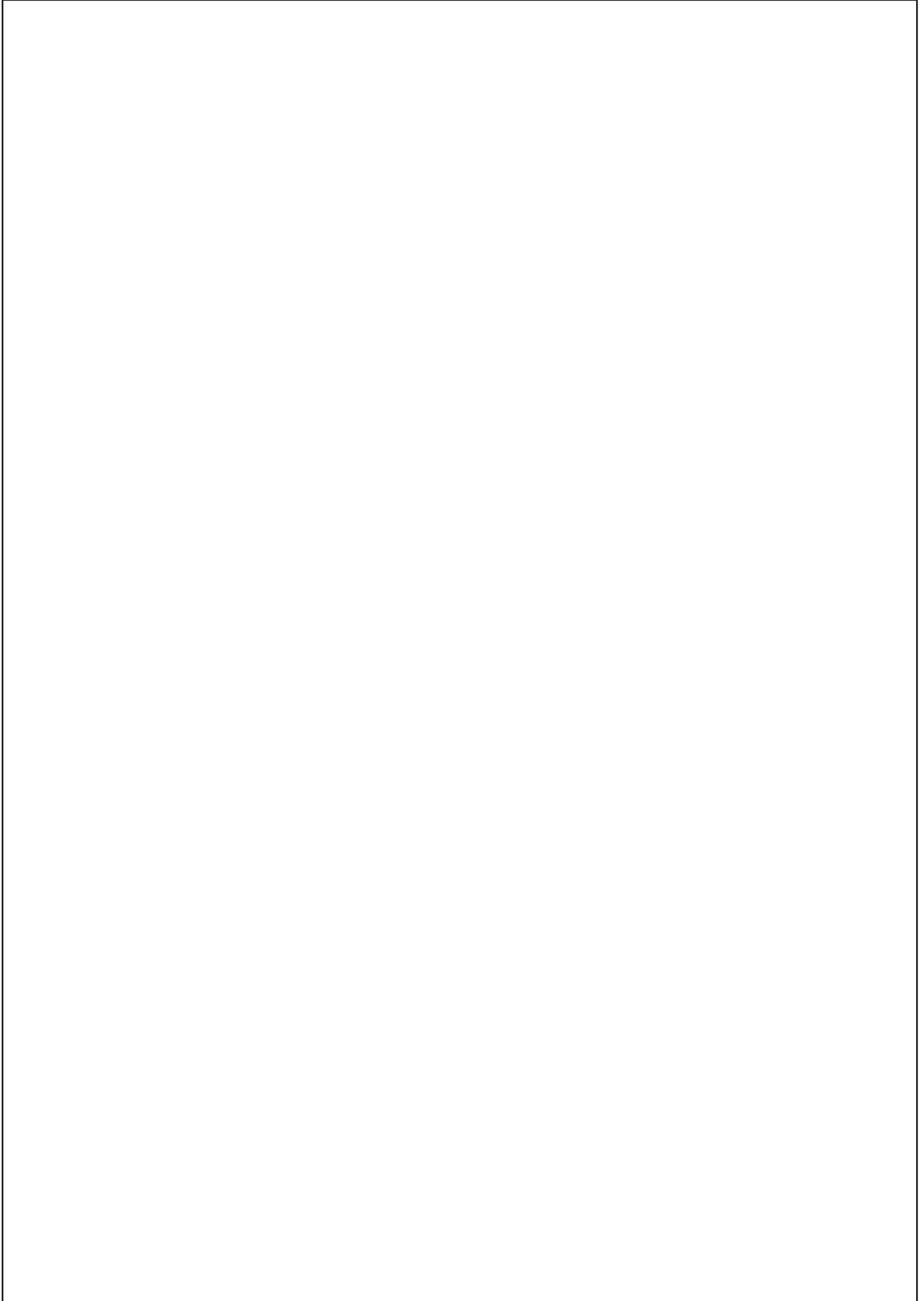
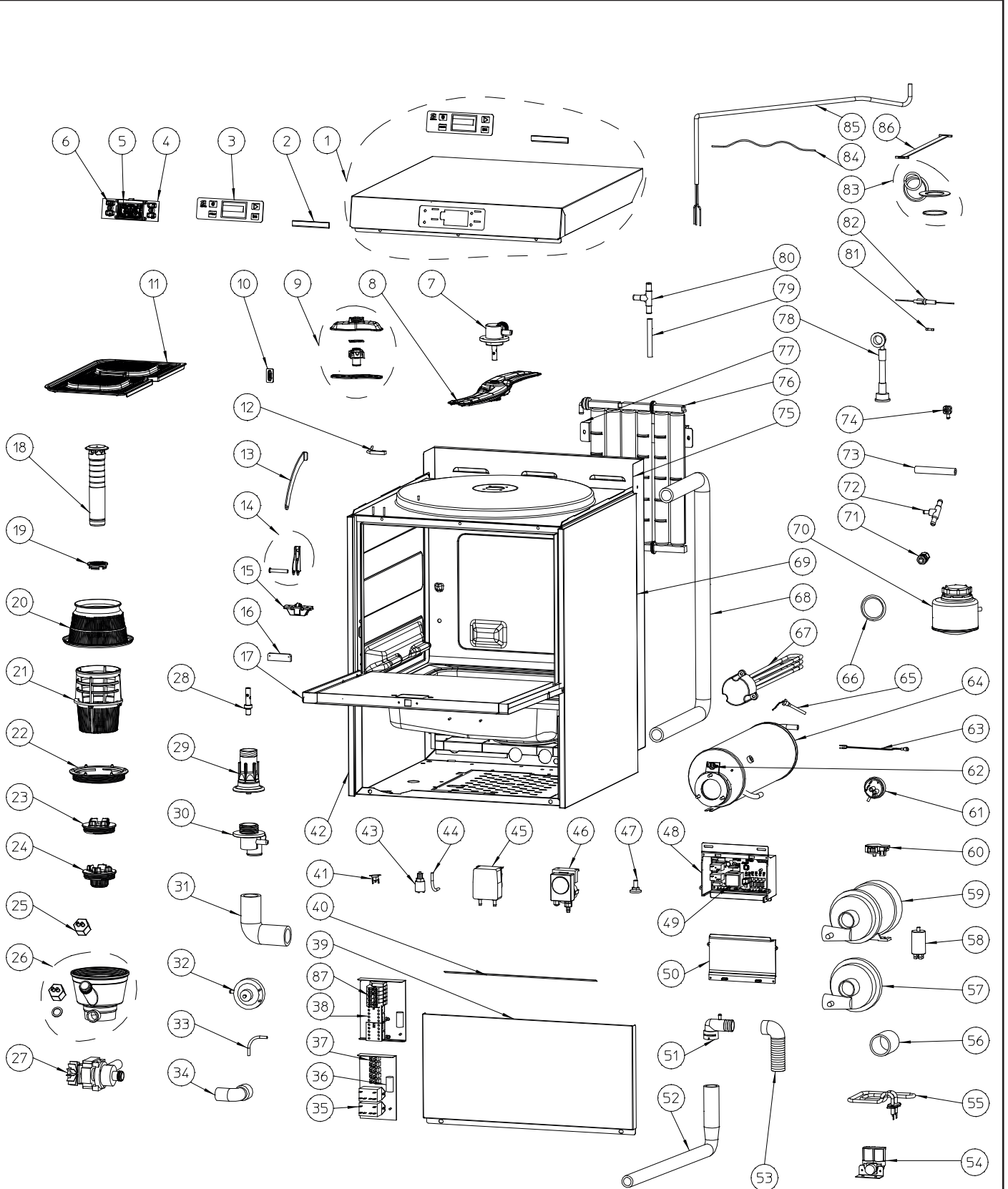


**LAVAVAJILLAS  
UX-50**
**DISHWASHER  
UX-50**
**LAVE-VAISSELLE  
UX-50**

| N.  | Denominación                                  | Description                        | Dénomination                            | Cod.    |
|-----|-----------------------------------------------|------------------------------------|-----------------------------------------|---------|
| 1a  | Panel mandos UX-50                            | Control panel UX-50                | Tableau commandes UX-50                 | 2319792 |
| 1b  | Panel mandos UX-50 S                          | Control panel UX-50 S              | Tableau commandes UX-50 S               | 2319793 |
| 2   | Junta puerta                                  | Door gasket set                    | Joint porte                             | 2319202 |
| 3   | Teclado UX                                    | Keyboard UX                        | Clavier UX                              | 2319764 |
| 4   | Placa teclado UX                              | Plate (keyboard) UX                | Plaque clavier UX                       | 2319760 |
| 5   | LCD lavado                                    | Washing LCD                        | LCD lavage                              | 2319752 |
| 6   | Guías luz UX                                  | Light guides UX                    | Guides lumière UX                       | 2319758 |
| 7   | Acoplador superior AX/UX-40                   | Top coupling AX/UX-40              | Accouplement supérieur AX/UX-40         | 2319632 |
| 8   | Difusores AX/UX-50                            | Dispersers AX/UX-50                | Diffuseur AX/UX-50                      | 2319790 |
| 9   | Accesorio difusor AX/UX-50                    | Dispersers' accessories AX/UX-50   | Accessoire diffuseur AX/UX-50           | 2319789 |
| 10  | Tope tirante AX/UX                            | Tie-beam stop AX/UX                | Butée tirant AX/UX                      | 2319772 |
| 11  | Filtro superficie AX/UX-50                    | Filter (surface) AX/UX-50          | Filtre surface AX/UX-50                 | 2319730 |
| 12  | Interruptor magnético                         | Magnetic switch set                | Interrupteur magnétique                 | 2319223 |
| 13  | Tirantes de puerta AX/UX                      | Door tighteners AX/UX              | Entretoise de porte AX/UX               | 2319770 |
| 14  | Bisagras puerta SL                            | Door hinge set SL                  | Charnière de porte SL                   | 2319068 |
| 15  | Cerradura AX/UX                               | Lock AX/UX                         | Serrure AX/UX                           | 2319614 |
| 16  | Imán puerta                                   | Door magnet set                    | Aimant porte                            | 2319222 |
| 17  | Puerta AX/UX-50                               | Door AX/UX-50                      | Porte AX/UX-50                          | 2319714 |
| 18  | Rebosadero AX/UX-50                           | Drain plug AX/UX-50                | Bloqueur d'eau AX/UX-50                 | 2319733 |
| 19  | Tapón filtro colector AX/UX                   | Collector filter plug AX/UX        | Bouchon filtre collecteur AX/UX         | 2319728 |
| 20  | Filtro colector AX/UX-50                      | Collector filter AX/UX-50          | Filtre collecteur AX/UX-50              | 2319726 |
| 21  | Filtro aspiración AX/UX-50                    | Intake filter AX/UX-50             | Filtre d'aspiration AX/UX-50            | 2319724 |
| 22  | Tuerca colector AX/UX-50                      | Collector washer AX/UX-50          | Ecrou collecteur AX/UX-50               | 2319722 |
| 23  | Soporte rebosadero AX/UX                      | Drain plug holder set AX/UX        | Support bloqueur d'eau AX/UX            | 2319732 |
| 24  | Filtro vaciado AX/UX                          | Drain filter AX/UX                 | Filtre vidange AX/UX                    | 2319731 |
| 25  | Tapón colector AX/UX                          | Collector plug AX/UXW              | Bouchon collecteur AX/UX                | 2319718 |
| 26  | Colector AX/UX-50                             | Collector AX/UX-50                 | Collecteur AX/UX-50                     | 2319716 |
| 27  | Bomba de vaciado 80W                          | Drain pump 80W                     | Pompe de vidange 80W                    | 2319534 |
| 28  | Eje torreta                                   | Shaft set (turret)                 | Axe tourette                            | 2319206 |
| 29  | Torreta 105                                   | Turret set 105                     | Tourette 105                            | 2319205 |
| 30  | Acoplador inferior 2 VIAS                     | Coupling body set 2(bottom)        | Accouplement inférieur 2                | 2319061 |
| 31  | Codo impulsión                                | Intake elbow set                   | Coude impulsion                         | 2319308 |
| 32  | Dosificador abrillantador red agua            | Doser rinsing water power          | Doseur de rinçage (Pres. Reseau)        | 2319274 |
| 33  | Tubo dosificador abrillantador                | Dosing hose set                    | Tuyau doseur de rinçage                 | 2319242 |
| 34  | Codo aspiración vaciado AX/UX                 | Drain intake elbow AX/UX           | Coude d'aspiration vidange AX/UX        | 2319624 |
| 35  | Relé potencia 220V AC 25A                     | Power relay set 220V AC 25A        | Relais puissance 220V AC 25A            | 2319314 |
| 36  | Filtro supresión interf.                      | Interference filter                | Filtre interférences                    | 2319643 |
| 37  | Regleta PA-76/5 FV                            | Terminal strip PA-76/5 FV          | Réglette PA-76/5 FV                     | 2319749 |
| 38  | Contactador B7-4000 220/240V                  | Contactador B7-4000 220/240V       | Contacteur B7-4000 220/240V             | 2319750 |
| 39a | Tapa frontal inferior AX/UX-50                | Cover (front lower) AX/UX-50       | Panneau frontal inférieur AX/UX-50      | 2319796 |
| 39b | Tapa frontal inferior UX-50 S                 | Cover (front lower) UX-50 S        | Panneau frontal inférieur UX-50 S       | 2319797 |
| 40  | Junta cierre 10x4x600                         | Lid gasket 10x4x600                | Joint fermeture 10x4x600                | 2313445 |
| 41  | Termostato seguridad cuba                     | Tank safety thermostat             | Thermostat de sécurité cuve             | 2319717 |
| 42  | Panel lateral izquierdo UX-50 S               | Side panel (left) UX-50 S          | Panneau latéral gauche UX-50 S          | 2319795 |
| 43  | Filtro dosificador con válvula                | Filter dosing set with valve       | Filtre doseur avec valve                | 2319226 |
| 44  | Tubo silicona con racord                      | Tube (silicone)                    | Tube silicone doseur (Lavage)           | 4306388 |
| 45  | Dosificador de detergente NPG                 | Detergent doser NPG                | Doseur de détergent NPG                 | 2319723 |
| 46  | Dosificador abrillantador peristaltico antir. | Peristaltic rinse-aid doser        | Doseur rinçage peristaltique antiretour | 2319715 |
| 47  | Pies                                          | Feet                               | PIEDS (x4)                              | 2319719 |
| 48  | Caja placa electrónica AX/UX                  | Print box AX/UX                    | Boite plaque électronique               | 2319635 |
| 49  | Placa VAX                                     | Print VAX                          | Plaque VAX                              | 2319766 |
| 50  | Tapa placa electrónica AX/UX                  | Print cover AX/UX                  | Couvercle plaque électronique AX/UX     | 2319636 |
| 51  | Anti-retorno                                  | Non-return set                     | Anti-retour                             | 2307538 |
| 52  | Codo vaciado AX/UX                            | Drain elbow AX/UX                  | Coude vidange AX/UX                     | 2319780 |
| 53  | Tubo manguera codo desagüe                    | Tube drain hose set                | Tuyau d'écoulement                      | 2319227 |
| 54a | Electroválvula 1vía                           | Electrovalve 1 way                 | Electrovanne simple                     | 2310721 |
| 54b | Electroválvula 2 vías                         | Electrovalve set 2 ways            | Electrovanne 2 voies                    | 2319241 |
| 55  | Resistencia 1800W 230V                        | Element 1800W 230V                 | Résistance 1800W 230V                   | 2319745 |
| 56  | Tubo aspiración lavado AX/UX-50               | Tube (wash sucking) AX/UX-50       | Tube aspiration lavage AX/UX-50         | 2319778 |
| 57a | Accesorios motobomba 1HP/770W                 | Motorpump accessories set 1HP/770W | Accessoires motopompe 1HP/770W          | 2319706 |
| 57b | Accesorios motobomba 650W 220/60              | Motorpump acces. 650W 220/60       | Accessoires pompe 650W 220/60           | 2319709 |
| 58  | Condensador motobomba 0,6kW                   | Capacitor (pump) 0,6kW             | Condensateur pompe 0.6kW                | 2319707 |
| 59a | Motobomba 1.1HP 230/50/1                      | Motorpump set 1.1HP 230/50/1       | Motopompe 1.1HP 230/50/1                | 2319705 |
| 59b | Motobomba 0.6kW 220/60/1                      | Motorpump 0.6kW 220/60/1           | Motopompe 0.6kW 220/60/1                | 2319708 |
| 60  | Sensor de presión                             | Pressure sensor                    | Senseur de pression                     | 2319773 |
| 61  | Presostato 125-90                             | Pressurestat 125-90                | Pressostat 125-90                       | 2319721 |
| 62  | Termostato de seguridad                       | Safety thermostat                  | Thermostat de sécurité                  | 2319230 |

UX-50





**LAVAVAJILLAS  
UX-50**

**DISHWASHER  
UX-50**

**LAVE-VAISSELLE  
UX-50**

| N.  | Denominación                       | Description                           | Dénomination                             | Cod.    |
|-----|------------------------------------|---------------------------------------|------------------------------------------|---------|
| 63  | Sonda temperatura NTC anillo JST   | Temperature probe NTC ring JST        | Sonde température NTC ANILLO JST         | 2319657 |
| 64  | Calderín UX-50                     | Boiler UX-50                          | Chaudière UX-50                          | 2319777 |
| 65  | Sonda temperatura NTC 1/8 inox JST | Temperature probe NTC 1/8 inox JST    | Sonde température NTC 1/8 INOX JST       | 2319658 |
| 66  | Juntas calderín                    | Boiler element rubber seal (2)        | Joints caoutchouc résistance chaudière 2 | 2309051 |
| 67a | Resistencia calderín 3000W (III)   | Boiler element set 3000W (III)        | Résistance chaudière 3000W (III)         | 2319325 |
| 67b | Resistencia 5000W 230V             | Element 5000W 230V                    | Résistance 5000W 230V                    | 2319747 |
| 67c | Resistencia calderín 4,5Kw         | Boiler element set 4,5 Kw.            | Résistance chaudière 4,5Kw               | 2309100 |
| 68  | Codo forma U desc. X50             | Elbow "U" water softener X50          | Coude U X50                              | 2319324 |
| 69  | Panel lateral derecho UX-50 S      | Side panel (right) UX-50 S            | Panneau latéral droit UX-50 S            | 2319794 |
| 70  | Depósito de sal                    | Salt container set                    | Reservoir sel                            | 2319239 |
| 71  | Prensaestopas                      | Stuffing box                          | Presse-étoupes                           | 2319214 |
| 72  | T conexion dosificador             | T connection doser                    | T connexion doseur                       | 2319273 |
| 73  | Manguera 8x17x1000                 | Hose 8x17x1000                        | Gâine 8x17x1000                          | 2319348 |
| 74  | Racord codo                        | Coupling                              | Raccord coude                            | 2313019 |
| 75a | Tapa trasera AX/UX-50              | Back cover AX/UX-50                   | Panneau arrière AX/UX-50                 | 2319798 |
| 75b | Tapa trasera UX-50 S               | Back cover UX-50 S                    | Panneau arrière UX-50 S                  | 2319799 |
| 76  | Descalcificador 6 columnas         | Water softener set (6 columns)        | Adoucisseur 6 colonnes                   | 2319737 |
| 77  | Soporte descalcificador 6 columnas | Water softener holder set (6 columns) | Support adoucisseur 6 colonnes           | 2319738 |
| 78  | Manguera entrada agua              | Water entry tube set                  | Tuyau arrivée d'eau                      | 2309745 |
| 79  | C.Manguera D12-2460                | Hose set T&S D12-2460                 | Tuyau D12-2460 (Ens.)                    | 2319468 |
| 80  | Conexiones en "t"                  | T connector (4)                       | Connexion en T (4)                       | 2309583 |
| 81  | Fusible Ø5X20 0.63 A               | Fuse set Ø5X20 0.63 A                 | Fusible Ø5X20 0.63A                      | 2312877 |
| 82  | Portafusibles aéreo                | Fuse holder set                       | Porte-fusibles                           | 2319232 |
| 83  | Juntas AX/UX                       | Gaskets AX/UX                         | Joints AX/UX                             | 2319725 |
| 84a | Cableado AX-UX-50 1~               | Electric wiring AX-UX-50 1~           | Câblage AX-UX-50 Monophasé               | 2319691 |
| 84b | Cableado UX-50 3~                  | Electric wiring UX-50 3~              | Câblage UX-50 triphasé                   | 2319692 |
| 84c | Suplemento cableado UX             | Wiring supplement UX                  | Supplément câblage UX                    | 2319763 |
| 85a | Cable manguera conexión LV 5x2.5   | Hose wire conex LV 5x2.5              | Câble gaine LV 5x2.5                     | 2302581 |
| 85b | Cable manguera                     | Hose wire                             | Câble                                    | 2149717 |
| 86  | Cable plano largo ULX-VAX-LVJ      | Plain wire (long) ULX-VAJ-LVJ         | Câble plat long ULX-VAX-LVJ              | 2319897 |
| 87  | Bornes conexión UX-50              | Connector set UX-50                   | Connecteur UX-50                         | 2319751 |



**UNE-EN ISO 9001**

SAMMIC, S.L. Basarte, 1 · 20720 AZKOITIA

Nota: Todas estas especificaciones están sujetas a cambio sin previo aviso, debido a la permanente mejora del producto.  
 Note: These specifications are subject to change without prior notice due to continuous product improvement.  
 Note: Toutes ces spécifications peuvent être modifiées sans préavis dû à une permanente amélioration du produit.